

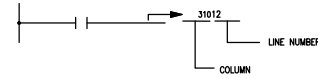
ABBREVIATIONS		SCHEMATIC SYMBOL
ALARM HORN	WH	
AMMETER	AM	
BATTERY	BATT	
CAPACITOR	C	
CENTRAL PROCESSING UNIT	PC	
CIRCUIT BREAKER	CB	
CONNECTOR	CON	
CONTACTOR POWER	PC	
CONTROL RELAY	CR	
COUNTER	CNT	
DIODE	D	
DISCONNECT	DIS	
DRIVE VFD & DC	VFD	
ENCODER	ENC	
FLUORESCENT LIGHT	FLT	
FUSE	FU	
GROUND	GND	
GROUND FAULT INTERRUPT	GFI	
JUMPER		
LIGHT EMITTING DIODE	LED	
LIMIT SWITCH [N.O.]	LS	
LIMIT SWITCH [N.C.]	LS	
LIMIT SWITCH [N.O. HELD CLOSED]	LS	
LIMIT SWITCH [N.C. HELD OPEN]	LS	
MOTOR	MT	
MOTOR STARTER	MS	
PHOTO-ELECTRIC SENSOR	PE	
PILOT LIGHT	PL	
POTENTIOMETER	POT	
POWER SUPPLY	PU	
PRESSURE SWITCH [N.O.]	PS	
PROGRAMABLE LOGIC CONTROLLER	PLC	
PROXIMITY SENSOR	PX	
PUSH BUTTON [N.O.]	PB	
PUSH BUTTON [N.C.]	PB	
PUSH BUTTON ILLUMINATED	PBPL	
RELAY CONTACT [N.O.]	CR	
RELAY CONTACT [N.C.]	CR	

ABBREVIATIONS		SCHEMATIC SYMBOL
RESISTOR	R	
SELECTOR SWITCH [N.O.]	SS	
SELECTOR SWITCH [N.C.]	SS	
SAFETY RELAY	SR	
SOLID STATE RELAY	SSR	
SOLENOID VALVE	SV	
TERMINAL BLOCK	TB	
THERMAL OVERLOAD	OL	
TEMPERATURE SWITCH	TS	
TRANSFORMER	T	
ULTRASONIC SENSOR	USS	
VACUUM SWITCH	VS	
VOLTMETER	VM	
BEACON LIGHT	BL	

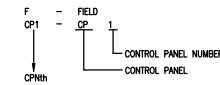
TERMINAL BLOCK COLOR CODE	
RED	= SAFETY
BLUE	= 24VDC
ORANGE	= INTERCONNECT
GREEN	= GROUND
BLACK	= 208-415VAC

CUSTOMER CONNECTION POINTS  
PAGE 7 (NEAR CP2 - 101) PAGE 38 (CP2 - 45208-11)  
PAGE 7 (CP2 - 205) PAGE 41 (CP2 - 46108-9)  
PAGE 22 (9401) PAGE 45 (60001)

### LINE NUMBER REFERENCES



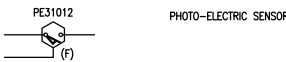
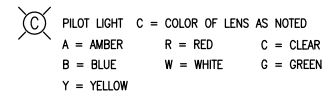
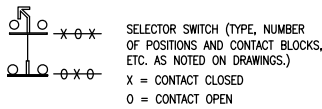
### LOCATION CODE



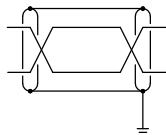
### COMPONENT IDENTIFICATION



- POWER OR CONTROL CONDUCTOR
- CONDUCTORS CONNECTED
- CONDUCTORS NOT CONNECTED



SHIELDED CABLE (GROUNDED END)



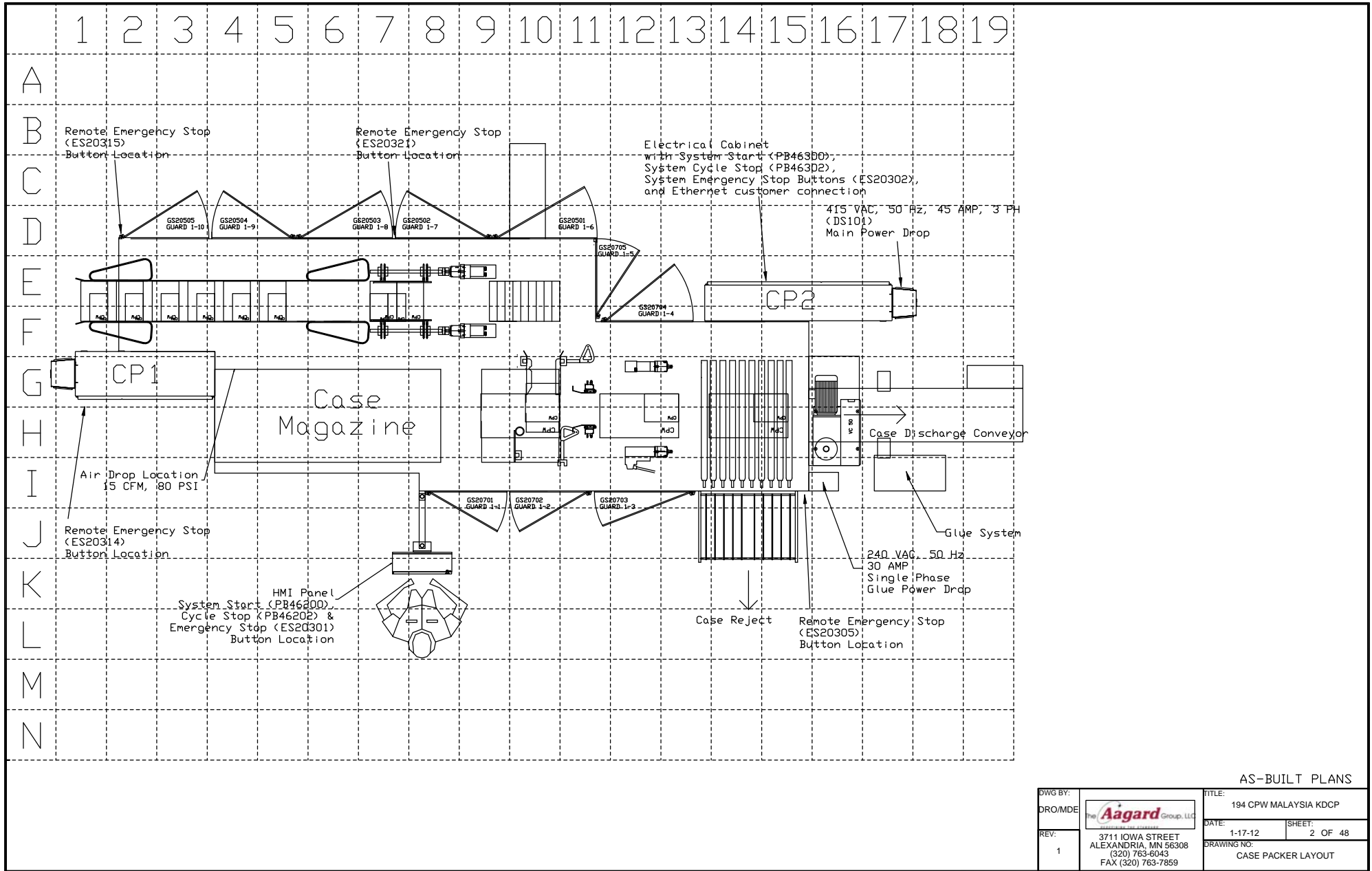
SH	FILENAME	SH	FILENAME
1	COVER PAGE	25	CASE PACKER 24VDC POWER DIST
2	CASE PACKER LAYOUT	26	CASE PACKER SAFETY WIRING
3	MAIN ENCLOSURES	27	CP INFEEED GUARD DOOR WIRING
4	CASE PACKER CP1 LAYOUT	28	CP MAIN GUARD DOOR WIRING
5	CASE PACKER CP2 LAYOUT	29	CASE PACKER SAFETY WIRING 2
6	HMI PANEL LAYOUT	30	LIGHT CURTAIN SAFETY WIRING
7	CP2 415VAC POWER DIST	31	PLC LOCAL 1 SLOTS 0-1
8	CP1 415VAC POWER DIST	32	PLC LOCAL SLOTS 2-3
9	CP INFEEED VFD WIRING	33	PLC REMOTE 2 SLOTS 1-2
10	CASE PACKER VFD WIRING	34	PLC REMOTE 2 SLOTS 3-4
11	SERVO 1-2	35	PLC REMOTE 2 SLOTS 5-6
12	SERVO 3-4	36	PLC REMOTE 2 SLOTS 7-9
13	SERVO 5-6	37	PLC REMOTE 2 SLOT 10-12
14	SERVO 7-8	38	PLC REMOTE 2 SLOTS 13
15	SERVO 9-10	39	PLC REMOTE 3 SLOT 1-2
16	SERVO 11-12	40	PLC REMOTE 3 SLOTS 3-4
17	SERVO 13-14	41	PLC REMOTE 3 SLOTS 5
18	SERVO 15	42	PLC REMOTE 3 SLOTS 6-7
19	SERVO 17-18	43	PLC REMOTE 3 SLOTS 8-10
20	SERVO 19-20	44	PLC REMOTE 3 SLOTS 11-13
21	SERVO 21-22	45	PLC REMOTE 3 SLOTS 14-15
22	CP HIGH POWER INTEGRATION	46	CASE PACKER PNEUMATICS 1
23	240VAC POWER DIST	47	CASE PACKER PNEUMATICS 2
24	CASE PRINTER INTEGRATION	48	ETHERNET NETWORK

NOTE: ALL WIRE 18 GA. UNLESS OTHERWISE NOTED  
NOTE: DIN IEC 757 WIRE COLORS ARE AS FOLLOWS UNLESS OTHERWISE NOTED  
120-415 VAC - BLACK; (NEUTRAL-BROWN)  
DC - BLUE; DC COMMON - BLUE  
EXTERNAL VOLTAGES - VIOLET  
(CP1) INFEEED ELECTRICAL ENCLOSURE  
(CP2) CP MAGAZINE I/O ELECTRICAL ENCLOSURE  
(HMI) HMI OPERATOR STATION

**Aagard**  
Alexandria, MN - www.aagard.com - 320-763-6043  
SERIAL# 194 DATE MFG: 01 / 2012  
POWER: 415VAC, 3 PH, 50 HZ, 45 FLA  
FUSE: JTD50ID  
LARGEST MOTOR: 2.9 AMPS  
ENCLOSURE TYPE: 12  
SCCR: 100 KA RMS SYM. 415 VMAX

### AS-BUILT PLANS

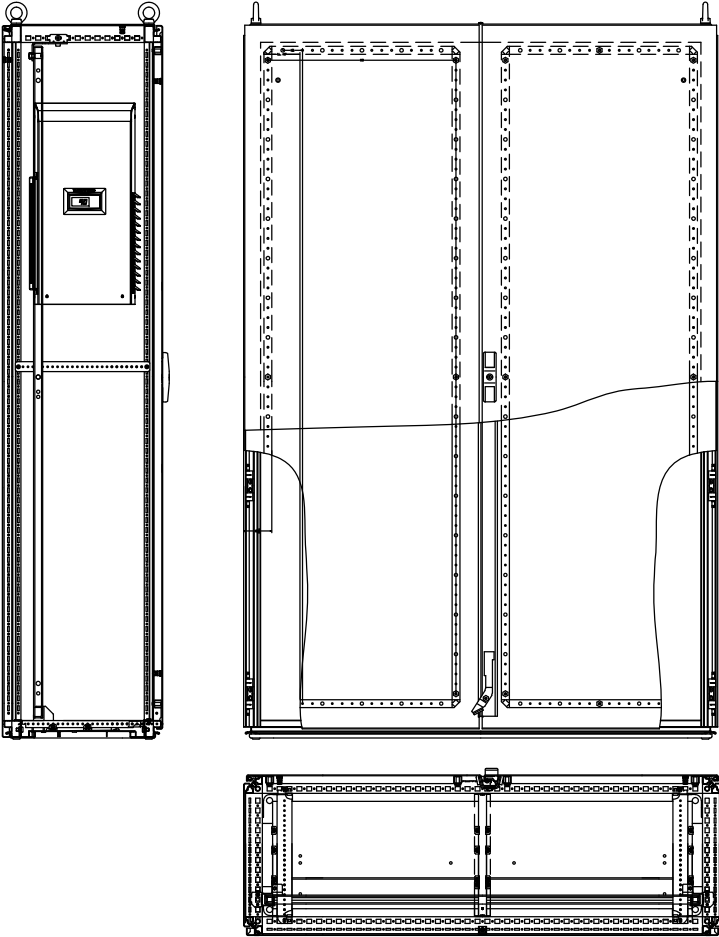
DWG BY:	The Aagard Group, LLC	TITLE: 194 CPW MALAYSIA KDCP	
DRO/MDE:		DATE: 1-17-12	SHEET: 1 OF 48
REV: 1	3711 IOWA STREET ALEXANDRIA, MN 56308 (320) 763-6043 FAX (320) 763-7859	DRAWING NO: COVER PAGE	



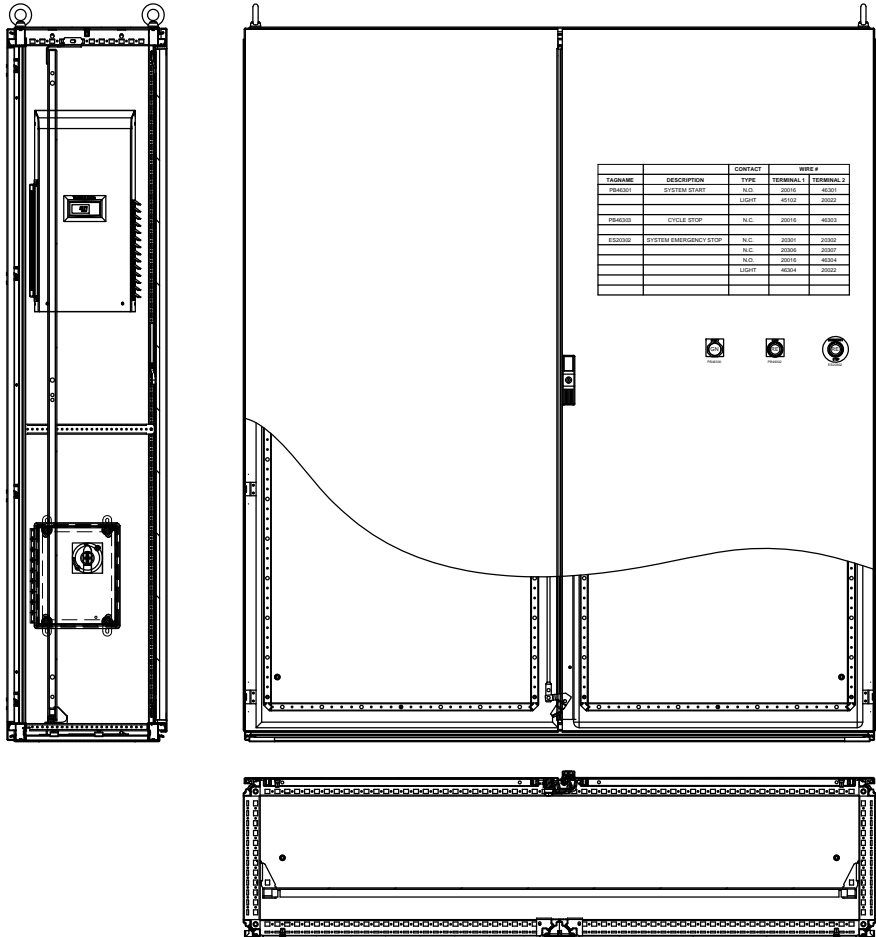
AS-BUILT PLANS

DWG BY: DRO/MDE		TITLE: 194 CPW MALAYSIA KDCP
REV: 1		DATE: 1-17-12
3711 IOWA STREET ALEXANDRIA, MN 56308 (320) 763-8043 FAX (320) 763-7859		DRAWING NO: CASE PACKER LAYOUT

Rittal 8284.500

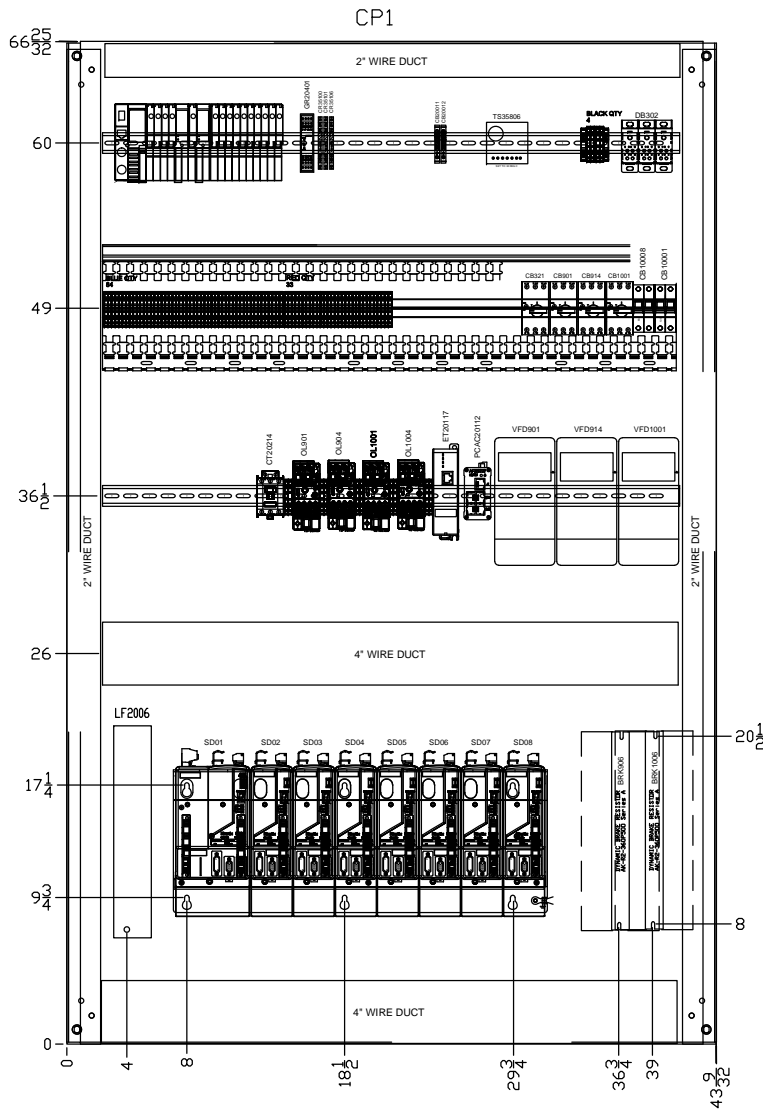


Rittal 8901.210



AS-BUILT PLANS

DWG BY:		TITLE:	
DRO/MDE		194 CPW MALAYSIA KDCP	
REV:	3711 IOWA STREET ALEXANDRIA, MN 56308 (320) 763-8043 FAX (320) 763-7859	DATE:	SHEET:
1		1-17-12	3 OF 48
		DRAWING NO:	
		MAIN ENCLOSURES	

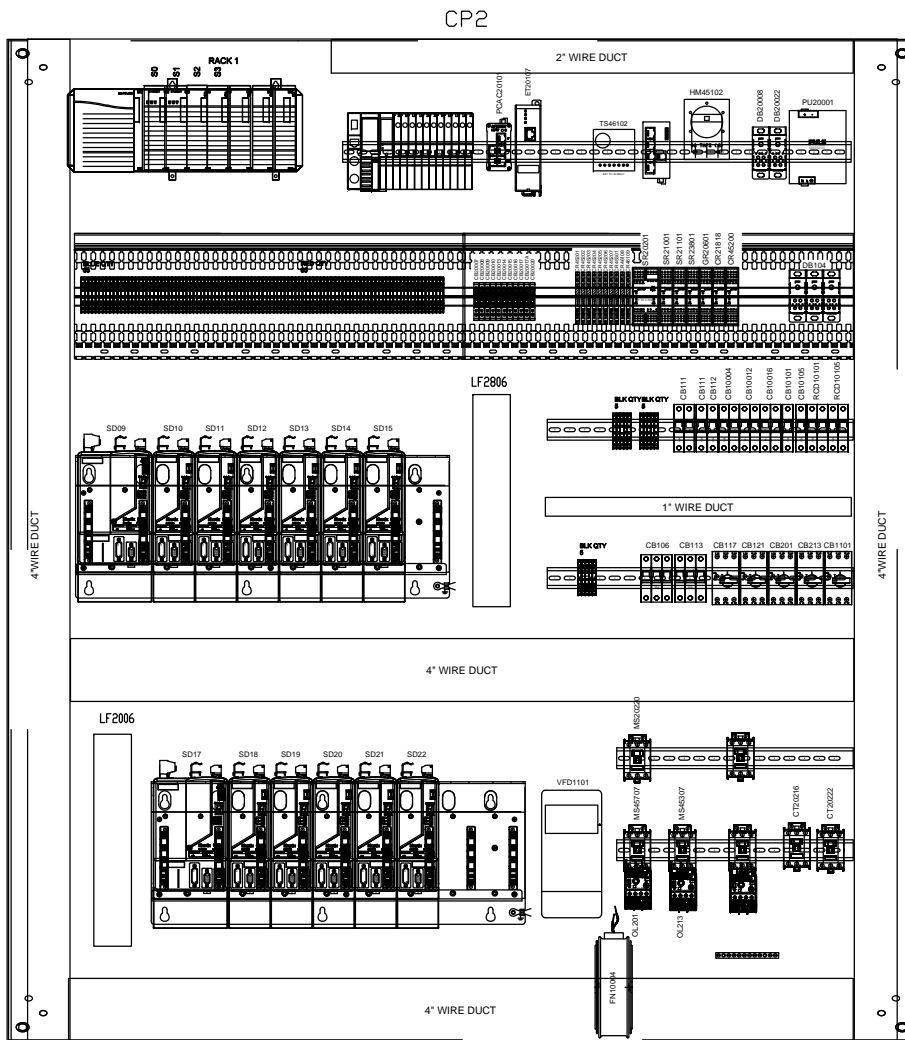


TAGNAME	CAT	CP1 DESC1
AC10001	Z0215126	Air Conditioner 220-240 vac 50/60 Hz
B02	Z0202177	Point I/O Adapter and Comm Interface Module
BRK1006	Z0095308	VFD PowerFlex Braking Resistor
BRK906	Z0095308	VFD PowerFlex Braking Resistor
CB10001	Z0214103	Circuit Breaker Supplementary 2 Pole Trip Curve C 10A
CB10008	Z0222495	Circuit Breaker Supplementary 2 Pole Trip Curve D 6A
CB1001	Z0168428	Circuit Breaker Motor Protection 2.5-4.0A
CB20011	Z0214093	Circuit Breaker Miniature Toggle 1 Pole 5A
CB20012	Z0214093	Circuit Breaker Miniature Toggle 1 Pole 5A
CB321	Z0219923	Circuit Breaker Motor Protection 24-29A
CB901	Z0168428	Circuit Breaker Motor Protection 2.5-4.0A
CB914	Z0168428	Circuit Breaker Motor Protection 2.5-4.0A
CR35101	Z0019843	Relay General Purpose SPDT
CR35102	Z0019843	Relay General Purpose SPDT
CR35106	Z0019843	Relay General Purpose SPDT
CT20214	Z0124833	Contactors 3 pole 37 A Contacts
DB302	Z0098868	Power Blocks 175 A 600 V 1 Pole
ET20117	Z0193366	AB Ethernet/IP Tap3 Copper Ports
GR2401	Z0062029	Safety Monitoring Relay Single/Dual channel
LF2006	Z0192891	Kinex Drive Line Filter
LT20019	Z0178469	LED Enclosure Light 24V
OL1001	Z0010826	Overload Relay 1.0-5.0 Amp
OL1004	Z0010826	Overload Relay 1.0-5.0 Amp
OL901	Z0010826	Overload Relay 1.0-5.0 Amp
OL904	Z0010826	Overload Relay 1.0-5.0 Amp
PCAC20112	Z0209846	Ethernet switch 5 Port DIN Mount 24vdc
S01_2	Z0202222	Point I/O 8 Channel Output Module
S02_2	Z0202222	Point I/O 8 Channel Output Module
S03_2	Z0202222	Point I/O 8 Channel Output Module
S04_2	Z0202222	Point I/O 8 Channel Output Module
S05_2	Z0202203	Point I/O 8 Channel Input Module
S06_2	Z0202203	Point I/O 8 Channel Input Module
S07_2	Z0202203	Point I/O 8 Channel Input Module
S08_2	Z0202203	Point I/O 8 Channel Input Module
S09_2	Z0202203	Point I/O 8 Channel Input Module
S10_2	Z0202203	Point I/O 8 Channel Input Module
S11_2	Z0202203	Point I/O 8 Channel Input Module
S12_2	Z0202203	Point I/O 8 Channel Input Module
S13_2	Z0205267	Point I/O 2 Channel Analog Current Input Module
SD01	Z0199218	Kinex Integrated Drive
SD02	Z0199220	Kinex Servo Drive
SD03	Z0199220	Kinex Servo Drive
SD04	Z0199220	Kinex Servo Drive
SD05	Z0199220	Kinex Servo Drive
SD06	Z0199220	Kinex Servo Drive
SD07	Z0199220	Kinex Servo Drive
SD08	Z0199220	Kinex Servo Drive
SPR01	Z0192809	Kinex Servo Drive Rack 8 slot
TS35807	Z0214074	Switch Temperature Control
VFD1001	Z0192826	VFD PowerFlex 40P 1 Hp
VFD901	Z0192826	VFD PowerFlex 40P 1 Hp
VFD914	Z0192826	VFD PowerFlex 40P 1 Hp

LAYOUT PARTS BEFORE  
DRILLING HOLES

AS-BUILT PLANS

DWG BY:	DRO/MDE		TITLE: 194 CPW MALAYSIA KDCP	
REV:	1		DATE: 1-17-12	SHEET: 4 OF 48
		3711 IOWA STREET ALEXANDRIA, MN 56308 (320) 763-6043 FAX (320) 763-7859	DRAWING NO: CASE PACKER CP1 LAYOUT	



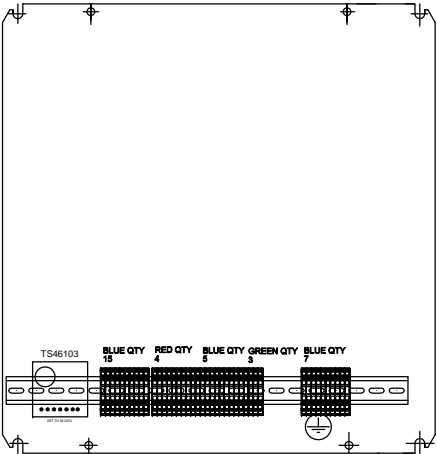
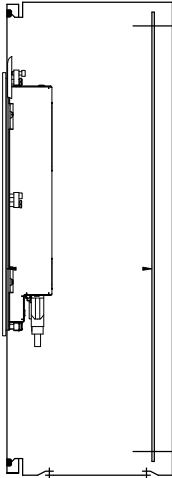
TAGNAME	CAT	CP2	TAGNAME	CAT	CP2
		DESC1			DESC1
AC10004	ZD215126	Air Conditioner 220-240 vac 50/60 Hz	OL201	Z0010826	Overload Relay 1.0-5.0 Amp
B01	ZD210540	ControlLogix 7 Slot Chassis 1756A7	OL205	Z0010826	Overload Relay 1.0-5.0 Amp
B03	ZD202177	Point I/O Adapter and Comm Interface Module	OL213	Z0010826	Overload Relay 1.0-5.0 Amp
CB106	ZD219931	Circuit Breaker Branch Circuit 3 Pole Trip Curve C 10A	PI46300	Z0176751	30.5 mm Extend Head w/ Guard Green Illuminated
CB110	ZD219930	Circuit Breaker Branch Circuit 2 Pole Trip Curve C 15A	PI46302	Z0146806	30.5 mm Extended Head Red Momentary
CB111	ZD222696	Circuit Breaker Supplementary 2 Pole Trip Curve D 16A	PCAC20017	Z0099106	Mosfet Six Channel External RS232
CB113	ZD220714	Circuit Breaker Branch Circuit 3 Pole Trip Curve C 40A	PCAC20101	Z0209846	Ethernet switch 5 Port DIN Mount 24vdc
CB117	ZD219923	Circuit Breaker Motor Protection 24-29A	PU20001	ZD221230	Power Supply 24 .28 VDC 40 Amp
CB121	ZD219923	Circuit Breaker Motor Protection 24-29A	PU20017	Z0195059	Power Converter 24 VDC to 15 VDC 2 Amp
CB201	Z0040031	Circuit Breaker Motor Protection 1.0-1.6A	RCD10101	ZD215144	Residual Current Device 2 Pole 16A
CB205	Z0040031	Circuit Breaker Motor Protection 1.0-1.6A	RCD10105	ZD215144	Residual Current Device 2 Pole 16A
CB213	Z0168428	Circuit Breaker Motor Protection 2.5-4.0A	REC10101	ZD215134	Interface Enclosure CAT. 6 RJ-45 F/FF 240VAC UK
CB1101	Z0168428	Circuit Breaker Motor Protection 2.5-4.0A	REC10105	ZD215135	Interface Enclosure 240VAC UK
CB10004	ZD214103	Circuit Breaker Supplementary 2 Pole Trip Curve C 10A	S00_1	Z0210539	ControlLogix Processor 1756-L73 8Mb
CB10012	ZD222495	Circuit Breaker Supplementary 2 Pole Trip Curve D 6A	S01_1	Z0016894	ControlLogix Ethernet Bridge Module
CB10016	ZD222495	Circuit Breaker Supplementary 2 Pole Trip Curve D 6A	S02_1	Z0194025	ControlLogix Ethernet Port Interface Module
CB10101	ZD220715	Circuit Breaker Branch Circuit 1 Pole Trip Curve C 15A	S03_1	Z0192889	ControlLogix High Speed Output Module
CB10105	ZD220715	Circuit Breaker Branch Circuit 1 Pole Trip Curve C 15A	S04_1	Z0024317	ControlLogix Empty Slot Filter
CB20007	ZD214094	Circuit Breaker Miniature Toggle 1 Pole 10A	S05_1	Z0024317	ControlLogix Empty Slot Filter
CB20008	ZD214094	Circuit Breaker Miniature Toggle 1 Pole 10A	S06_1	Z0024317	ControlLogix Empty Slot Filter
CB20009	ZD214093	Circuit Breaker Miniature Toggle 1 Pole 5A	S01_3	Z0202222	Point I/O 8 Channel Output Module
CB20010	ZD214093	Circuit Breaker Miniature Toggle 1 Pole 5A	S02_3	Z0202222	Point I/O 8 Channel Output Module
CB20015	ZD214093	Circuit Breaker Miniature Toggle 1 Pole 5A	S03_3	Z0202222	Point I/O 8 Channel Output Module
CB20016	ZD214093	Circuit Breaker Miniature Toggle 1 Pole 5A	S04_3	Z0202222	Point I/O 8 Channel Output Module
CB20017	ZD214096	Circuit Breaker Miniature Toggle 1 Pole 1A	S05_3	Z0202222	Point I/O 8 Channel Output Module
CB20017	ZD214096	Circuit Breaker Miniature Toggle 1 Pole 1A	S06_3	Z0202203	Point I/O 8 Channel Input Module
CB20020	ZD214094	Circuit Breaker Miniature Toggle 1 Pole 10A	S07_3	Z0202203	Point I/O 8 Channel Input Module
CR45200	ZD117800	Safety Monitoring Relay Single channel	S08_3	Z0202203	Point I/O 8 Channel Input Module
CR45201	Z0019843	Relay General Purpose SPDT	S09_3	Z0202203	Point I/O 8 Channel Input Module
CR45202	Z0019843	Relay General Purpose SPDT	S10_3	Z0202203	Point I/O 8 Channel Input Module
CR45203	Z0019843	Relay General Purpose SPDT	S11_3	Z0202203	Point I/O 8 Channel Input Module
CR45204	Z0019843	Relay General Purpose SPDT	S12_3	Z0202203	Point I/O 8 Channel Input Module
CR45205	Z0019843	Relay General Purpose SPDT	S13_3	Z0202203	Point I/O 8 Channel Input Module
CR45206	Z0019843	Relay General Purpose SPDT	S14_3	Z0202203	Point I/O 8 Channel Input Module
CR45207	Z0019843	Relay General Purpose SPDT	S15_3	Z0202567	Point I/O 2 Channel Analog Current Input Module
CR45301	Z0019843	Relay General Purpose SPDT	SD09	Z0199218	Kinetix Integrated Drive
CR45407	ZD117800	Safety Monitoring Relay Single channel	SD10	Z0199220	Kinetix Servo Drive
CR45705	Z0019843	Relay General Purpose SPDT	SD11	Z0199220	Kinetix Servo Drive
CR46108	Z0019843	Relay General Purpose SPDT	SD12	Z0199220	Kinetix Servo Drive
CR46109	Z0019843	Relay General Purpose SPDT	SD13	Z0199220	Kinetix Servo Drive
CT2810	ZD124833	Contactors 3 pole 37 A Contacts	SD14	Z0199220	Kinetix Servo Drive
CT3610	ZD124833	Contactors 3 pole 37 A Contacts	SD15	Z0199220	Kinetix Servo Drive
DB10004	Z0098868	Power Blocks 175 A 600 V 1 Pole	SD17	Z0199218	Kinetix Integrated Drive
DB104	Z0098868	Power Blocks 175 A 600 V 1 Pole	SD18	Z0199220	Kinetix Servo Drive
DB20008	Z0098868	Power Blocks 175 A 600 V 1 Pole	SD19	Z0199220	Kinetix Servo Drive
DB20022	Z0098868	Power Blocks 175 A 600 V 1 Pole	SD20	Z0199220	Kinetix Servo Drive
ES20002	Z0004654	30.5 mm Mushroom Head Red Illuminated	SD21	Z0199220	Kinetix Servo Drive
ET20107	ZD193366	AB Ethernet/IP Tap3 Copper Ports	SD22	Z0199220	Kinetix Servo Drive
FN10004	ZD202204	Fan, 6" Cooling Fan AC 230V	SPR02	Z0192809	Kinetix Servo Drive Rack 8 slot
GR20601	Z0062029	Safety Monitoring Relay Single/Dual channel	SPR03	Z0192809	Kinetix Servo Drive Rack 8 slot
HM45102	ZD061974	Hour Meter	SR20201	Z0014223	Safety Monitoring Relay 1-2 Ch Input
LF2806	Z0192891	Kinetix Drive Line Filter	SR21001	Z0121181	Safety Relay Expansion Unit 4
LF3606	Z0192891	Kinetix Drive Line Filter	SR21101	Z0121181	Safety Relay Expansion Unit 4
LT20020	Z0179469	LED Enclosure Light Fixture 24V	SR21801	Z0214492	LED10 Fluor. Class
MS20216	Z0198019	Contactors 3 pole 9 A Contacts	TS46102	ZD214074	Switch Temperature Control
MS20220	Z0198019	Contactors 3 pole 9 A Contacts	VFD1101	Z0192826	VFD POWERFLEX 40P 1 Hp
MS45307	Z0214061	Contactors 3 pole 12 A Contacts			
MS45704	Z0198019	Contactors 3 pole 9 A Contacts			
MS45707	Z0198019	Contactors 3 pole 9 A Contacts			

AS-BUILT PLANS

DWG BY:		TITLE:	194 CPW MALAYSIA KDCP
DRO/MDE:		DATE:	1-17-12
REV:	3711 IOWA STREET ALEXANDRIA, MN 55308 (320) 763-8043 FAX (320) 763-7859	SHEET:	5 OF 48
1		DRAWING NO.:	CASE PACKER CP2 LAYOUT

TAGNAME	CAT	DESC1
HMI20103	Z0201622	PanelView Plus 6 1500 Color Touch Screen
TS46103	Z0214074	Switch Temperature Control

Rittal AE1060.600



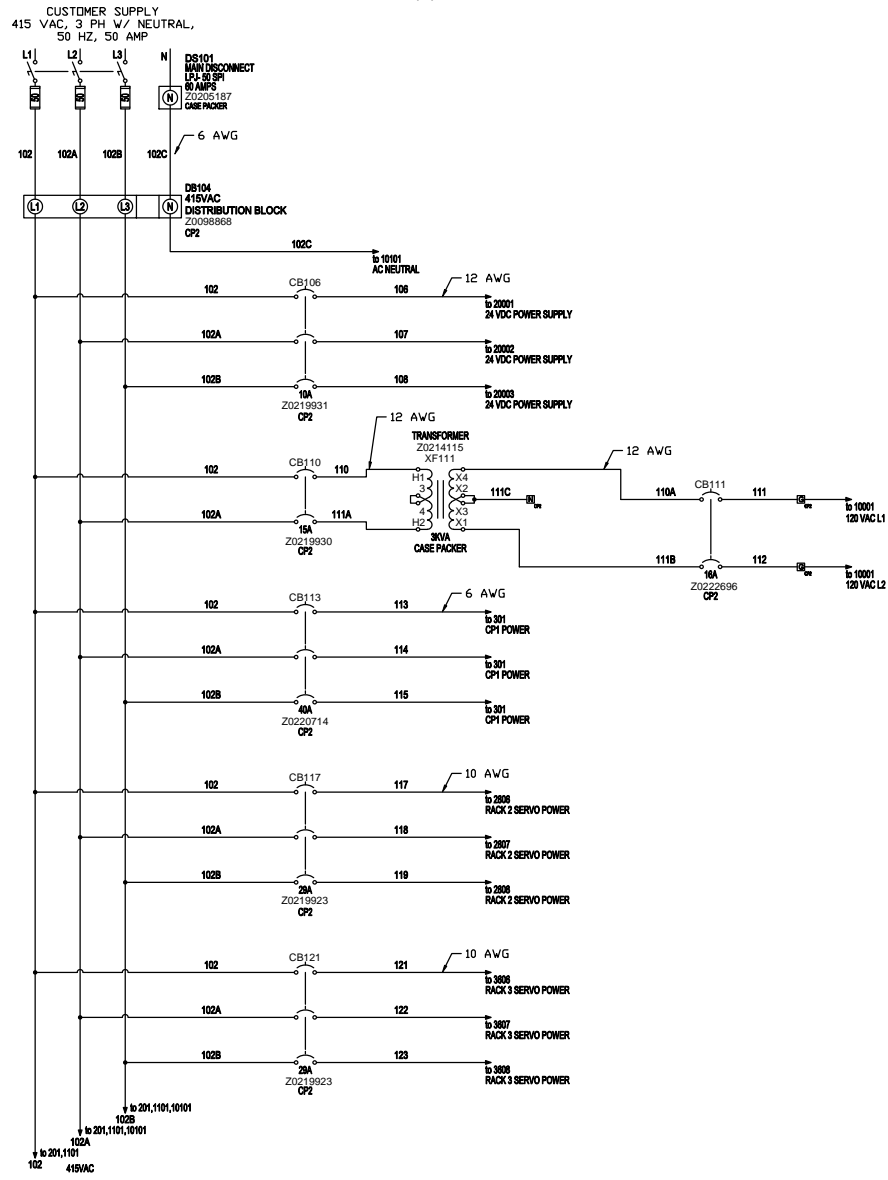
Measure from the corner of the door

PUSH BUTTON	DESCRIPTION	CONTACT	WIRE #	
			TERMINAL 1	TERMINAL 2
PB46200	SYSTEM START	N.O.	20016	46200
		LIGHT	45101	20022
PB46202	CYCLE STOP	N.C.	20016	46202
ES20301	SYSTEM EMERGENCY STOP	N.C.	20203	20301
		N.C.	20205	20306
		N.O.	20016	46203
		LIGHT	46203	20022

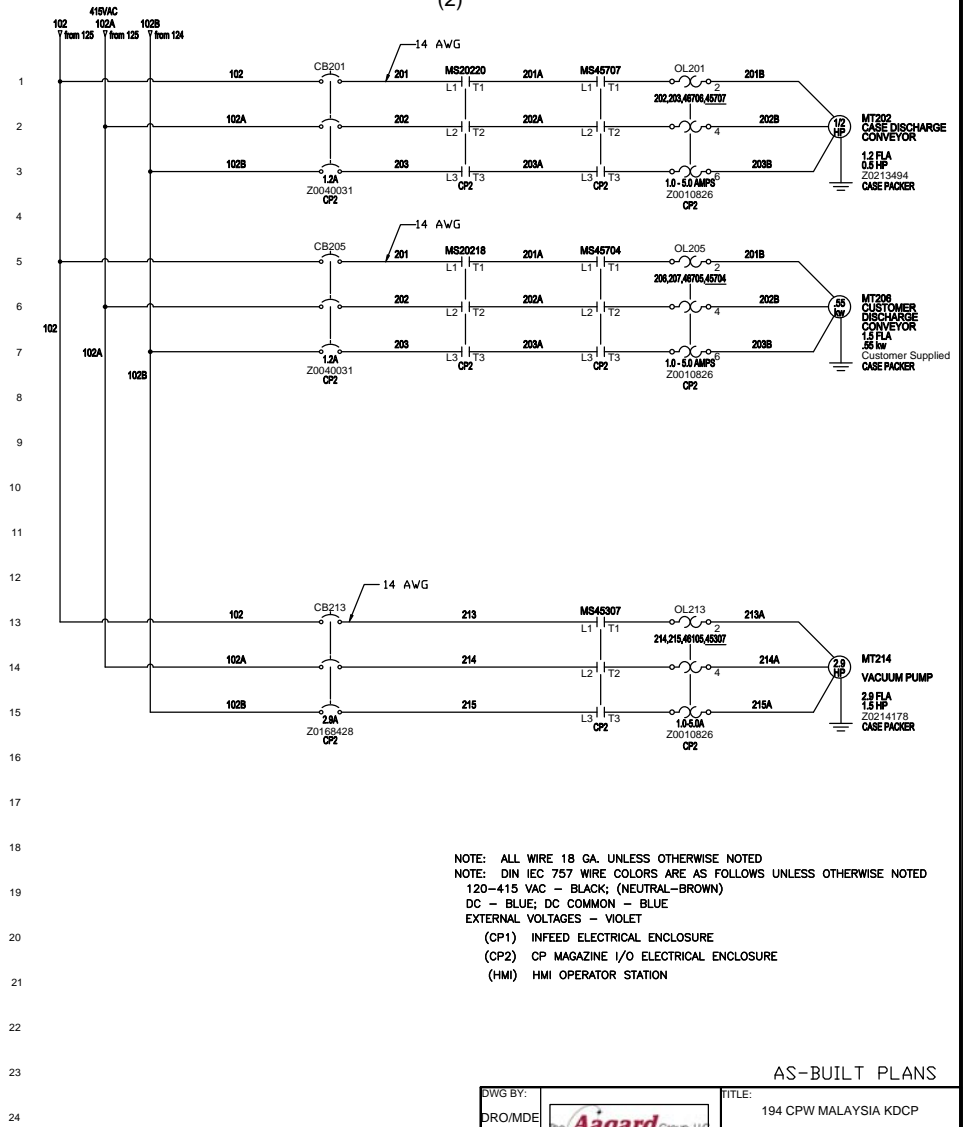
AS-BUILT PLANS

DWG BY:		TITLE:	
DRO/MDE		194 CPW MALAYSIA KDCP	
REV:	3711 IOWA STREET ALEXANDRIA, MN 56308 (320) 763-8043 FAX (320) 763-7859	DATE:	SHEET:
1		1-17-12	6 OF 48
		DRAWING NO:	
		HMI PANEL LAYOUT	

(1)



(2)

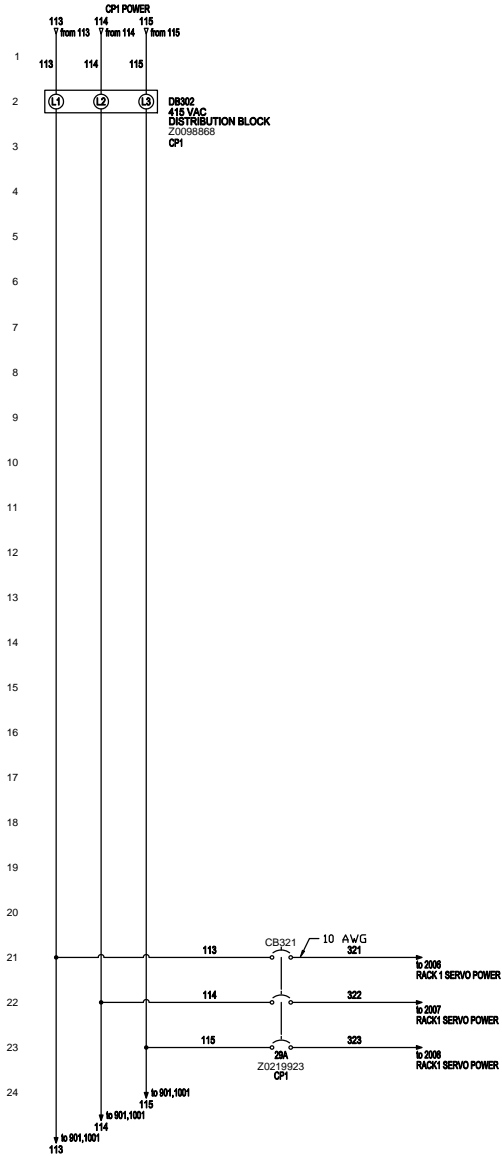


AS-BUILT PLANS

DWG BY:	The Agard Group, LLC INDUSTRIAL ELECTRICAL SERVICES	TITLE:	194 CPW MALAYSIA KDCP	
DRO/MDE:		DATE:	1-17-12	SHEET: 7 OF 48
REV:	3711 IOWA STREET ALEXANDRIA, MN 55308 (320) 763-8043 FAX (320) 763-7859	DRAWING NO.:	CP2 415VAC POWER DIST	
1				

(3)

(4)



NOTE: ALL WIRE 18 GA. UNLESS OTHERWISE NOTED  
 NOTE: DIN IEC 757 WIRE COLORS ARE AS FOLLOWS UNLESS OTHERWISE NOTED  
 120-415 VAC - BLACK; (NEUTRAL-BROWN)  
 DC - BLUE; DC COMMON - BLUE  
 EXTERNAL VOLTAGES - VIOLET  
 (CP1) INFEEED ELECTRICAL ENCLOSURE  
 (CP2) CP MAGAZINE I/O ELECTRICAL ENCLOSURE  
 (HMI) HMI OPERATOR STATION

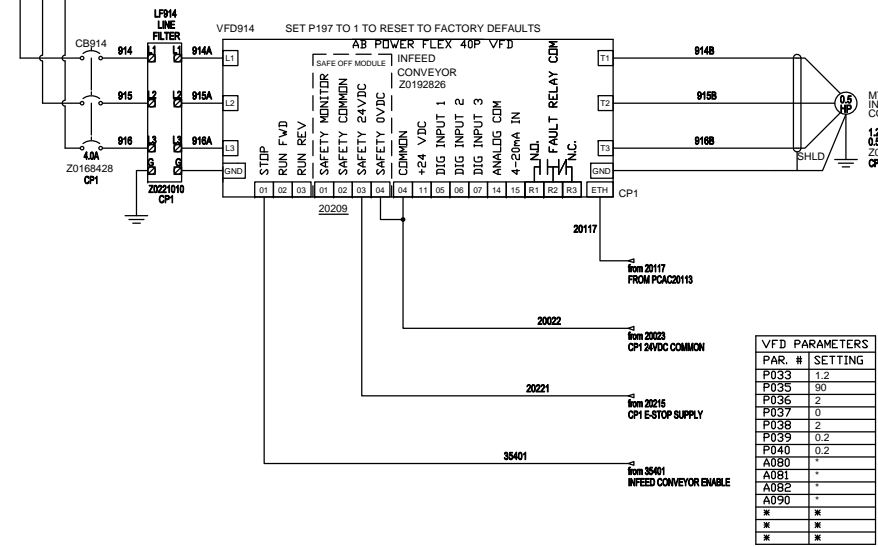
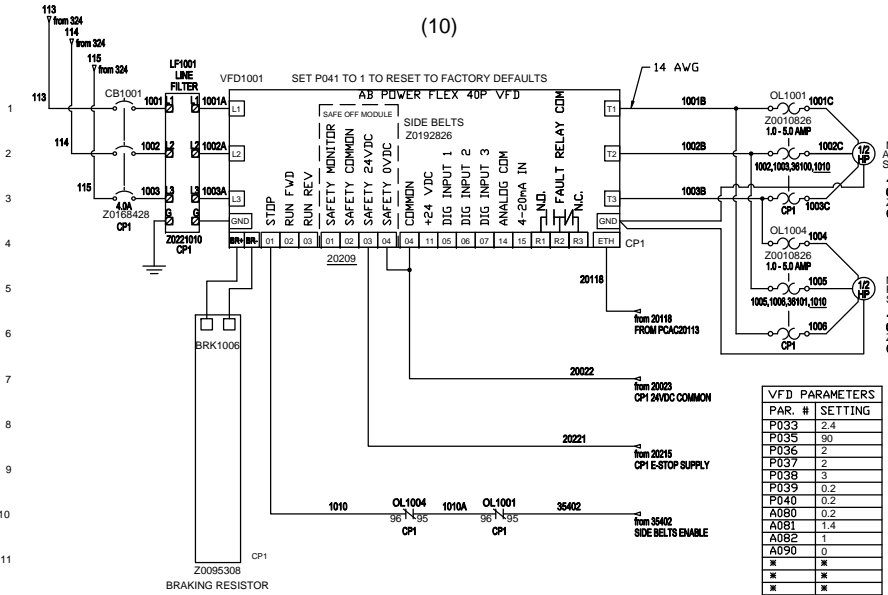
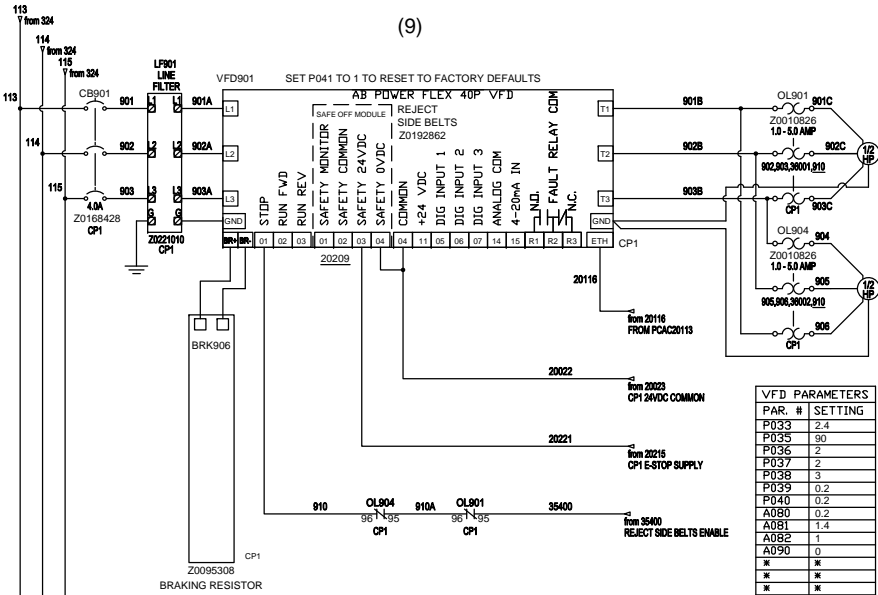
AS-BUILT PLANS

DWG BY:		TITLE: 194 CPW MALAYSIA KDCP	
DRO/MDE:		DATE: 1-17-12	SHEET: 8 OF 48
REV: 1	3711 IOWA STREET ALEXANDRIA, MN 56308 (320) 763-8043 FAX (320) 763-7859	DRAWING NO: CP1 415VAC POWER DIST	



(9)

(10)



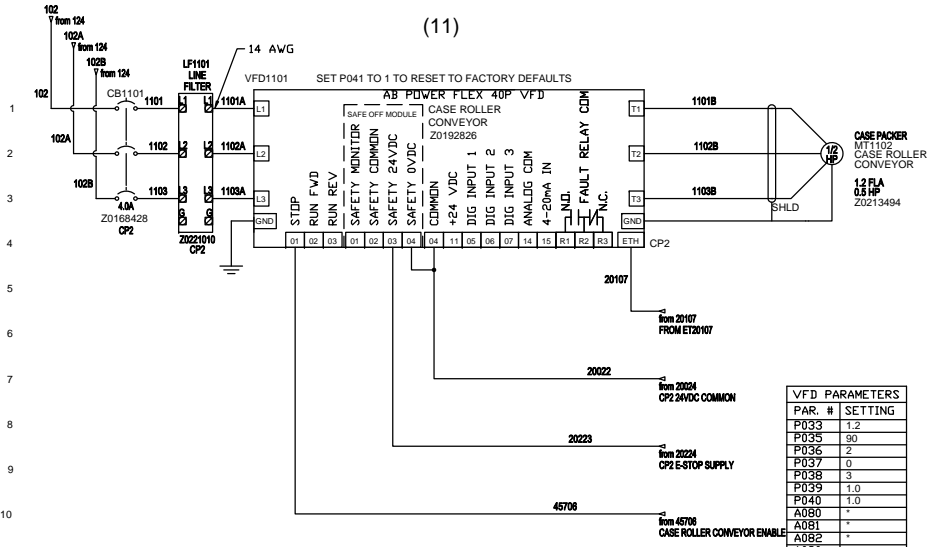
NOTE: ALL WIRE 18 GA. UNLESS OTHERWISE NOTED  
 NOTE: DIN IEC 757 WIRE COLORS ARE AS FOLLOWS UNLESS OTHERWISE NOTED  
 120-415 VAC - BLACK; (NEUTRAL-BROWN)  
 DC - BLUE; DC COMMON - BLUE  
 EXTERNAL VOLTAGES - VIOLET  
 (CP1) INFEED ELECTRICAL ENCLOSURE  
 (CP2) CP MAGAZINE I/O ELECTRICAL ENCLOSURE  
 (HMI) HMI OPERATOR STATION

AS-BUILT PLANS

DWG BY:		TITLE:	194 CPW MALAYSIA KDCP
DRO/MDE:		DATE:	1-17-12 SHEET: 9 OF 48
REV:	1	3711 IOWA STREET ALEXANDRIA, MN 56308 (320) 763-6043 FAX (320) 763-7859	DRAWING NO: CP INFEED VFD WIRING

(11)

(12)

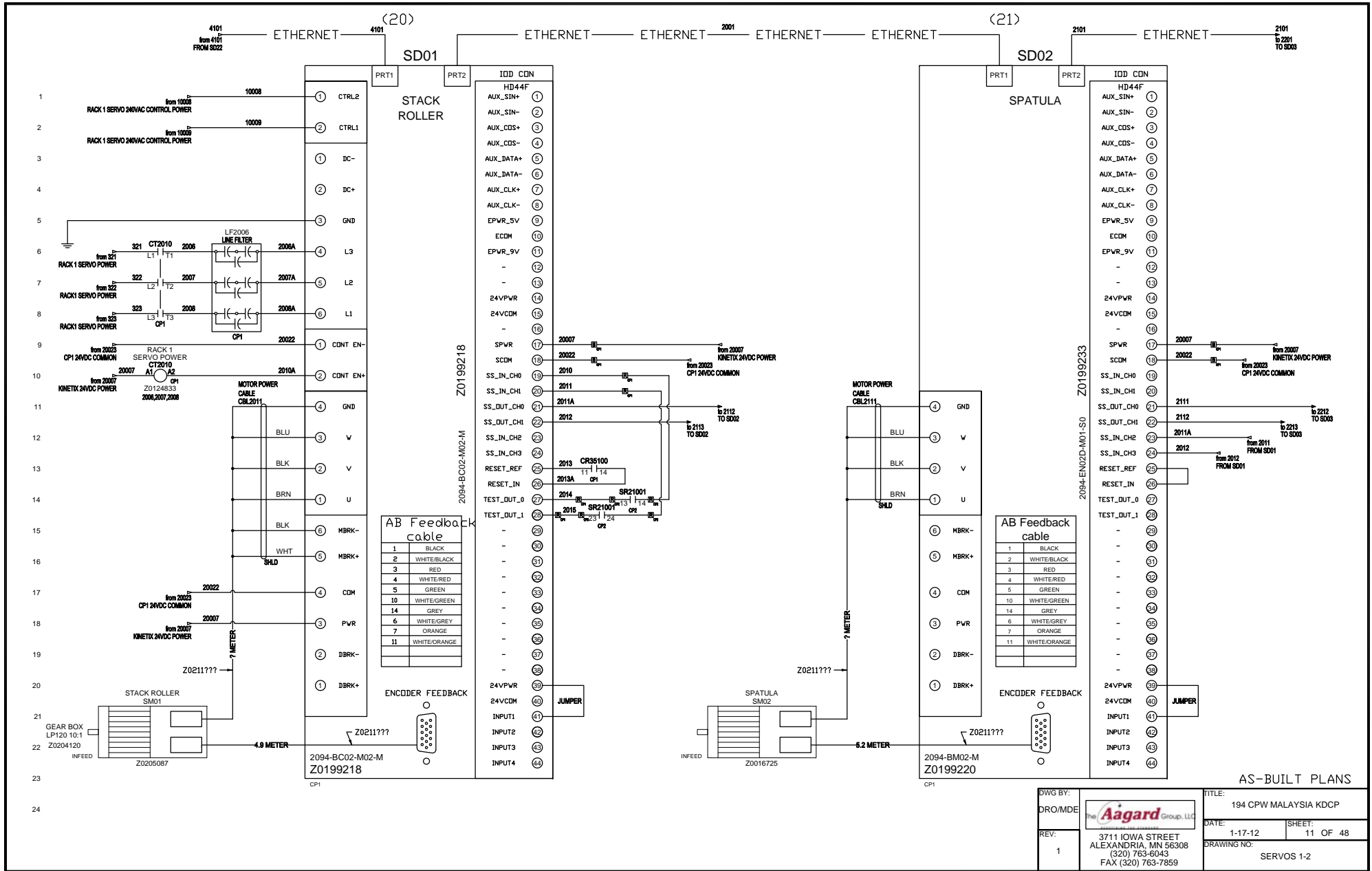


VFD PARAMETERS	
PAR. #	SETTING
P033	1.2
P035	90
P036	2
P037	0
P038	3
P039	1.0
P040	1.0
A080	-
A081	-
A082	-
A090	-
*	*
*	*
*	*

NOTE: ALL WIRE 18 GA. UNLESS OTHERWISE NOTED  
 NOTE: DIN IEC 757 WIRE COLORS ARE AS FOLLOWS UNLESS OTHERWISE NOTED  
 120-415 VAC - BLACK; (NEUTRAL-BROWN)  
 DC - BLUE; DC COMMON - BLUE  
 EXTERNAL VOLTAGES - VIOLET  
 (CP1) INFEED ELECTRICAL ENCLOSURE  
 (CP2) CP MAGAZINE I/O ELECTRICAL ENCLOSURE  
 (HMI) HMI OPERATOR STATION

AS-BUILT PLANS

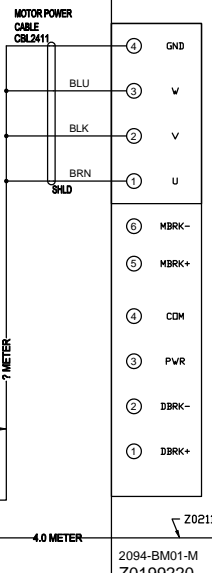
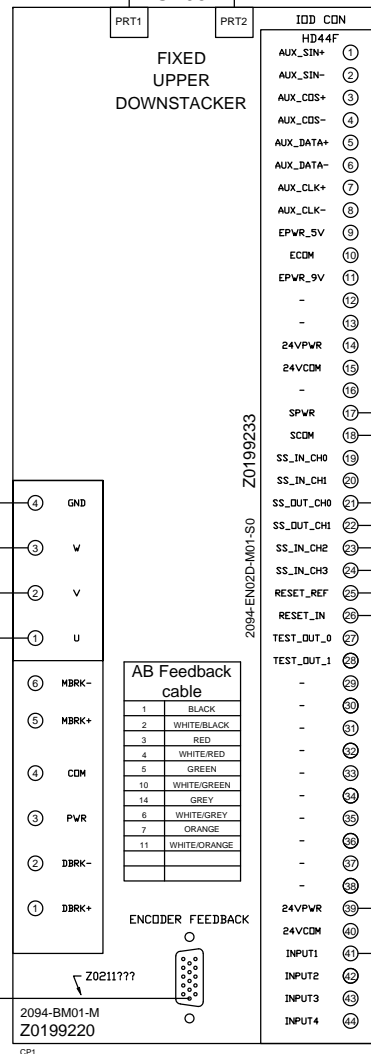
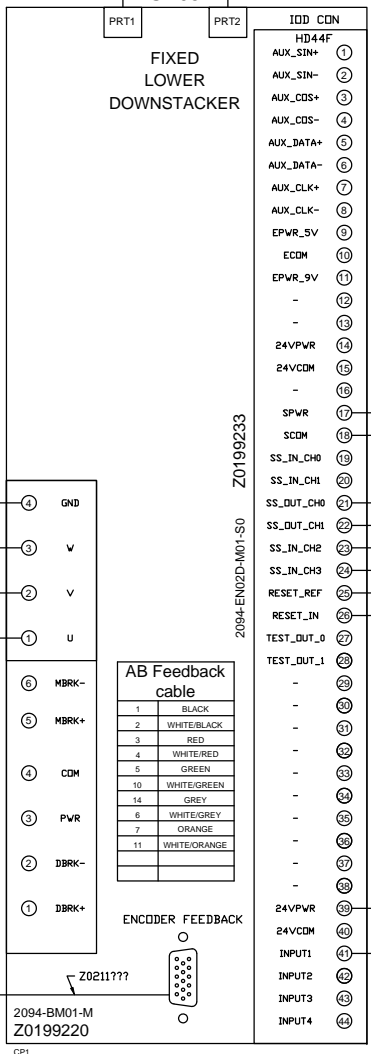
DWG BY:		TITLE:	
DRO/MDE		194 CPW MALAYSIA KDCP	
REV:	3711 IOWA STREET ALEXANDRIA, MN 56308 (320) 763-6043 FAX (320) 763-7859	DATE:	SHEET:
1		1-17-12	10 OF 48
		DRAWING NO:	
		CASE PACKER VFD WIRING	



AS-BUILT PLANS

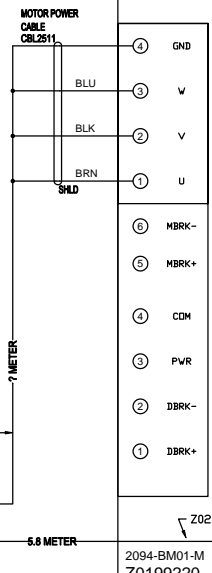
DWG BY: DRO/MDE		TITLE: 194 CPW MALAYSIA KDCP	
REV: 1		DATE: 1-17-12	SHEET: 11 OF 48
3711 IOWA STREET ALEXANDRIA, MN 56308 (320) 763-8043 FAX (320) 763-7859		DRAWING NO: SERVOS 1-2	





AB Feedback cable

1	BLACK
2	WHITE/BLACK
3	RED
4	WHITE/RED
5	GREEN
10	WHITE/GREEN
14	GREY
6	WHITE/GREY
7	ORANGE
11	WHITE/ORANGE



AB Feedback cable

1	BLACK
2	WHITE/BLACK
3	RED
4	WHITE/RED
5	GREEN
10	WHITE/GREEN
14	GREY
6	WHITE/GREY
7	ORANGE
11	WHITE/ORANGE

1

2

3

4

5

6

7

8

9

10

11

12

13

14

15

16

17

18

19

20

21

22

23

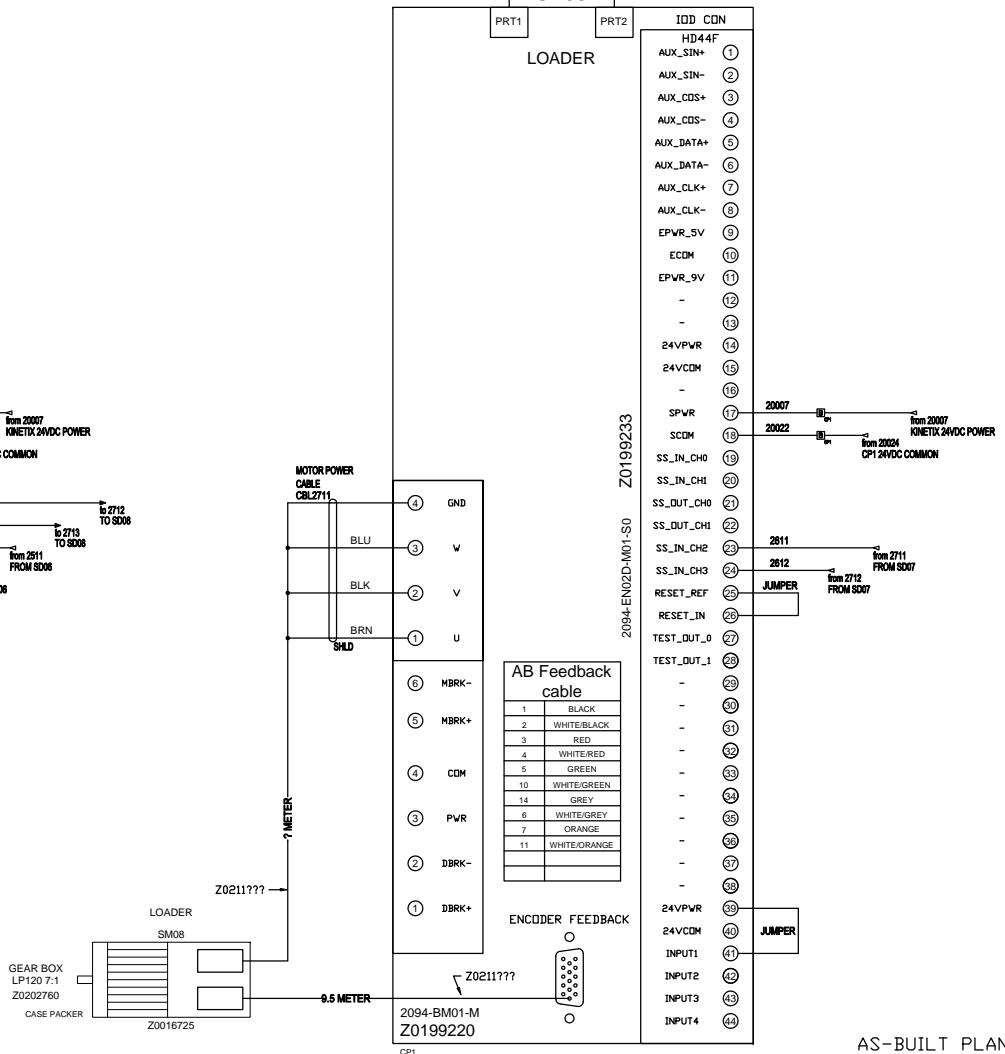
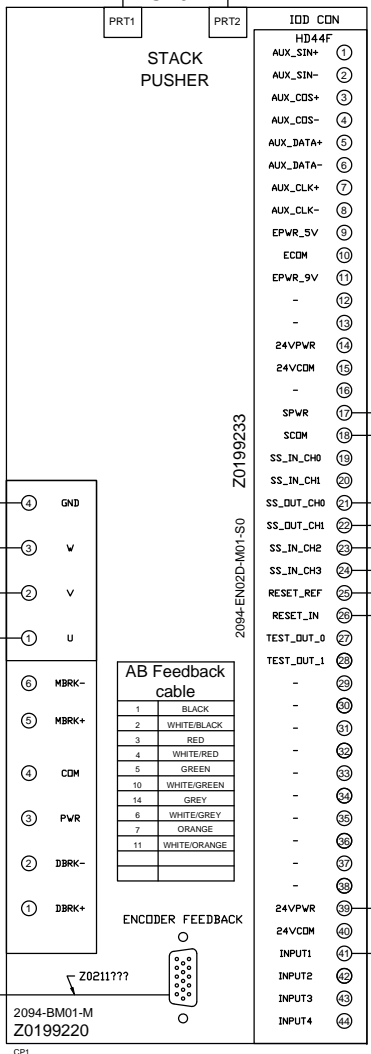
24

AS-BUILT PLANS


DWG BY: DRO/MDE		TITLE: 194 CPW MALAYSIA KDCP	
REV: 1		DATE: 1-17-12	SHEET: 13 OF 48
3711 IOWA STREET ALEXANDRIA, MN 56308 (320) 763-8043 FAX (320) 763-7859		DRAWING NO: SERVOS 5-6	

2501 FROM SD07 TO ET2016  
 ETHERNET (26) SD07  
 ETHERNET ETHERNET ETHERNET ETHERNET 2501  
 (27) SD08  
 ETHERNET 2701 TO ET2017

1  
2  
3  
4  
5  
6  
7  
8  
9  
10  
11  
12  
13  
14  
15  
16  
17  
18  
19  
20  
21  
22  
23  
24

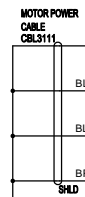
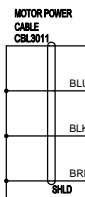
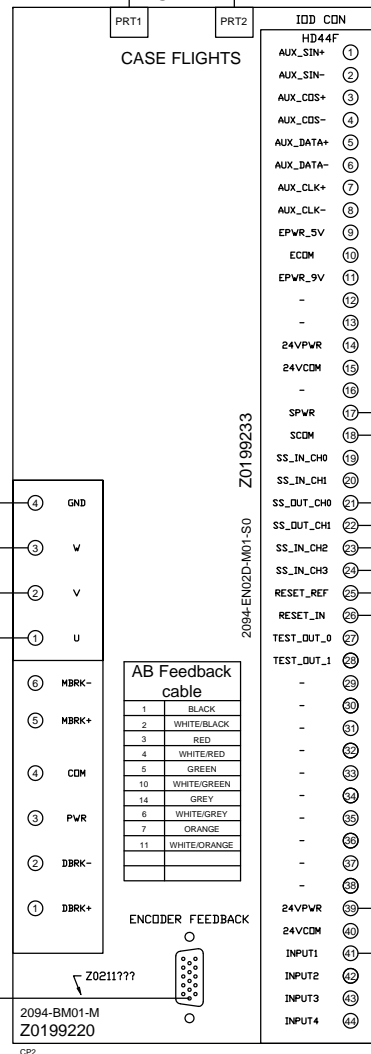
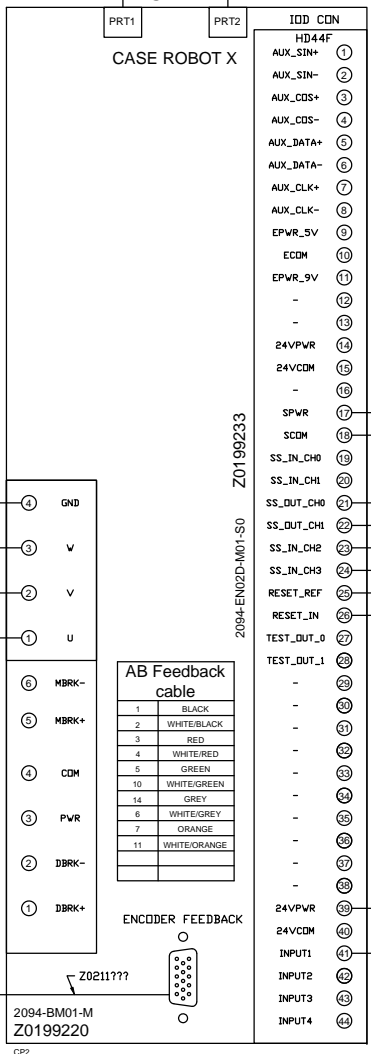


AS-BUILT PLANS

DWG BY: DRO/MDE	 THE AGARD GROUP, LLC 3711 IOWA STREET ALEXANDRIA, MN 56308 (320) 763-8043 FAX (320) 763-7859	TITLE: 194 CPW MALAYSIA KDCP	
REV: 1		DATE: 1-17-12	SHEET: 14 OF 48
		DRAWING NO: SERVOS 7-8	



ETHERNET — 2901 — (30) — SD11 — ETHERNET — ETHERNET — 3001 — ETHERNET — ETHERNET — (31) — SD12 — ETHERNET — 3101 — 3101 TO SD13

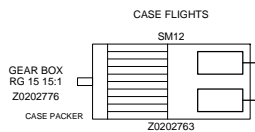
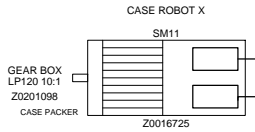
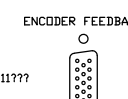
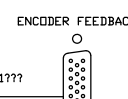


AB Feedback cable


1	BLACK
2	WHITE/BLACK
3	RED
4	WHITE/RED
5	GREEN
10	WHITE/GREEN
14	GREY
6	WHITE/GREY
7	ORANGE
11	WHITE/ORANGE

AB Feedback cable

1	BLACK
2	WHITE/BLACK
3	RED
4	WHITE/RED
5	GREEN
10	WHITE/GREEN
14	GREY
6	WHITE/GREY
7	ORANGE
11	WHITE/ORANGE

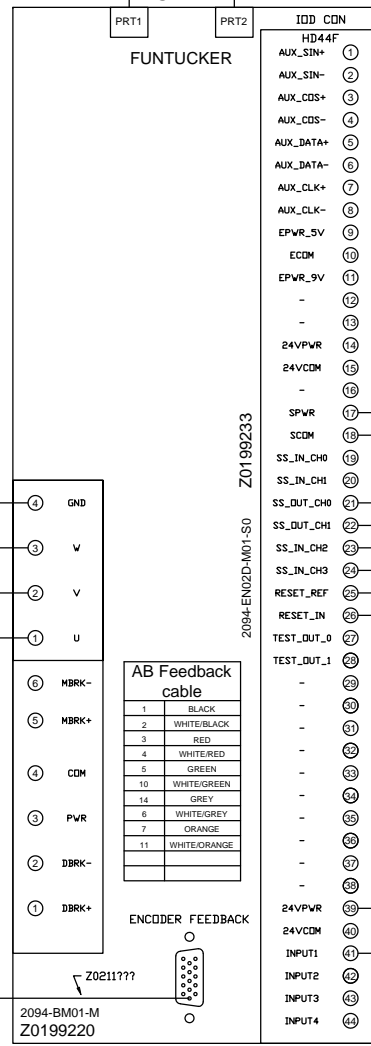
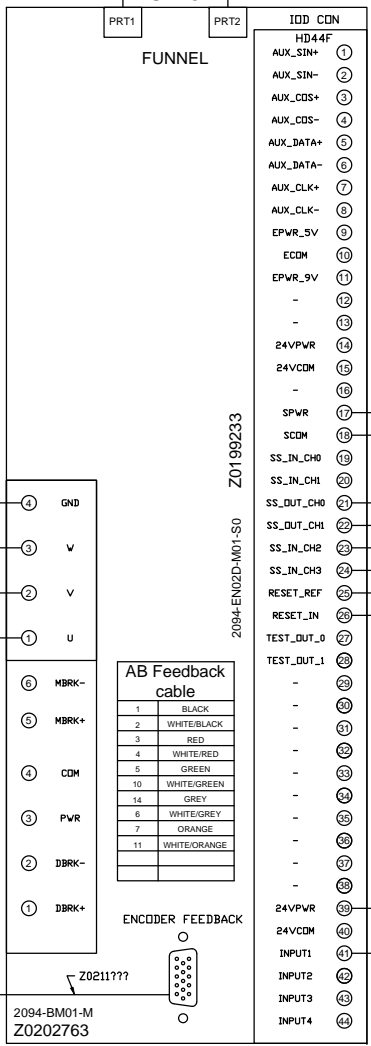


AS-BUILT PLANS

DWG BY: DRO/MDE		TITLE: 194 CPW MALAYSIA KDCP
REV: 1		DATE: 1-17-12
3711 IOWA STREET ALEXANDRIA, MN 56308 (320) 763-6043 FAX (320) 763-7859		DRAWING NO: SERVOS 11-12



3101 FROM SD12 — ETHERNET — 3101 (32) — ETHERNET — ETHERNET — 3201 — ETHERNET — ETHERNET — 3301 (33) — ETHERNET — 3301 TO SD15

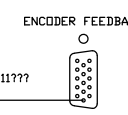
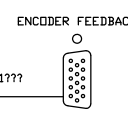


AB Feedback cable

1	BLACK
2	WHITE/BLACK
3	RED
4	WHITE/RED
5	GREEN
10	WHITE/GREEN
14	GREY
6	WHITE/GREY
7	ORANGE
11	WHITE/ORANGE

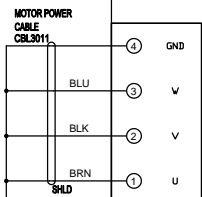
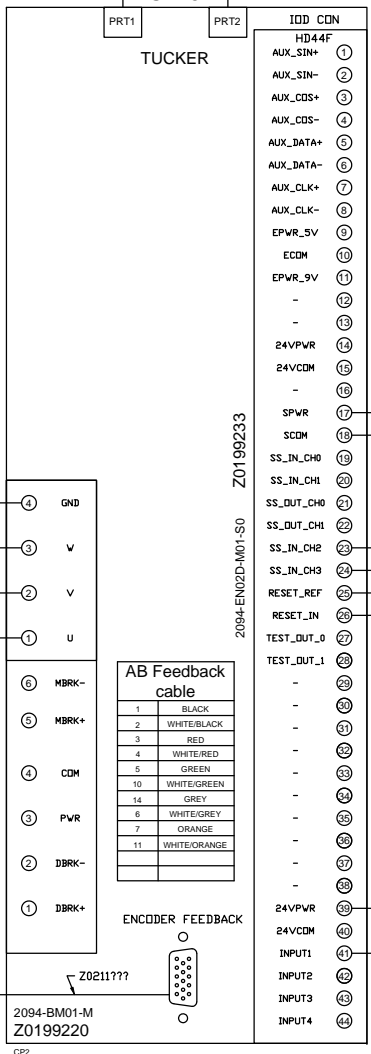
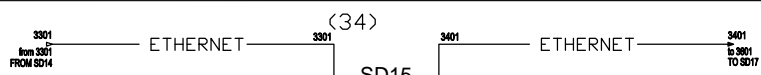
AB Feedback cable

1	BLACK
2	WHITE/BLACK
3	RED
4	WHITE/RED
5	GREEN
10	WHITE/GREEN
14	GREY
6	WHITE/GREY
7	ORANGE
11	WHITE/ORANGE



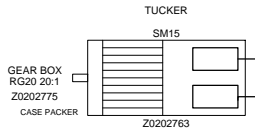
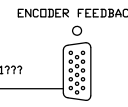
AS-BUILT PLANS

DWG BY: DRO/MDE		TITLE: 194 CPW MALAYSIA KDCP
REV: 1		DATE: 1-17-12
3711 IOWA STREET ALEXANDRIA, MN 56308 (320) 763-8043 FAX (320) 763-7859		DRAWING NO: SERVOS 13-14



AB Feedback cable

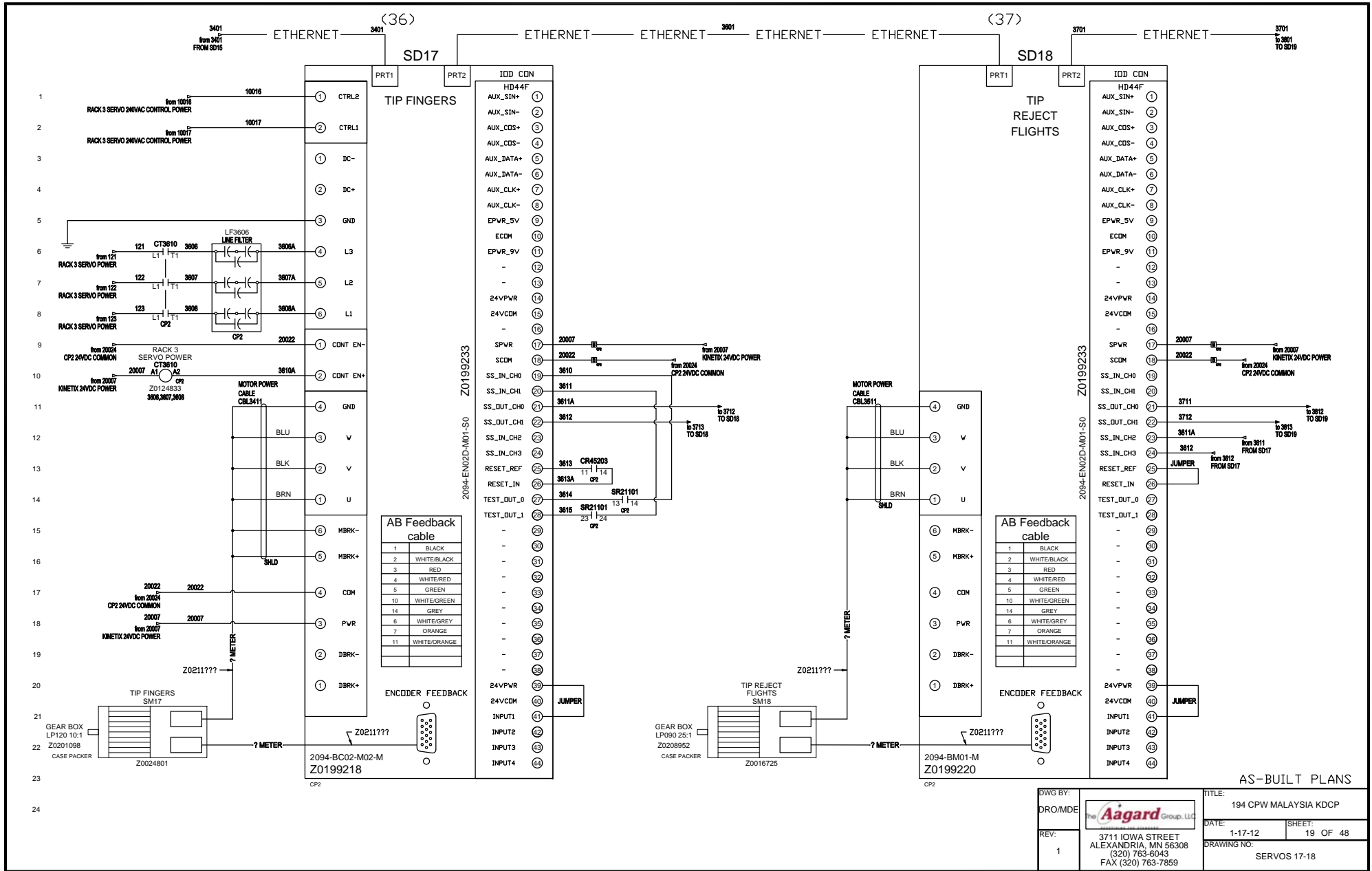
1	BLACK
2	WHITE/BLACK
3	RED
4	WHITE/RED
5	GREEN
10	WHITE/GREEN
14	GREY
6	WHITE/GREY
7	ORANGE
11	WHITE/ORANGE



1  
2  
3  
4  
5  
6  
7  
8  
9  
10  
11  
12  
13  
14  
15  
16  
17  
18  
19  
20  
21  
22  
23  
24

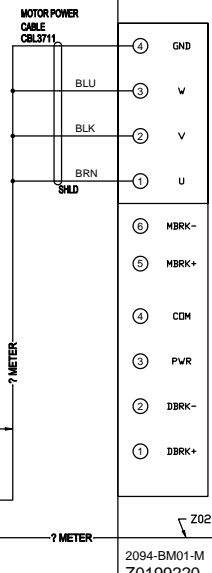
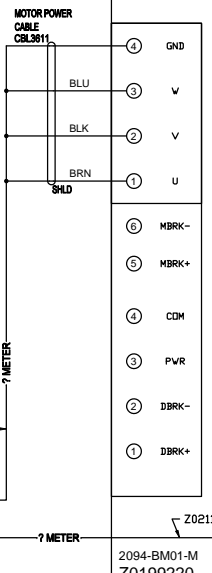
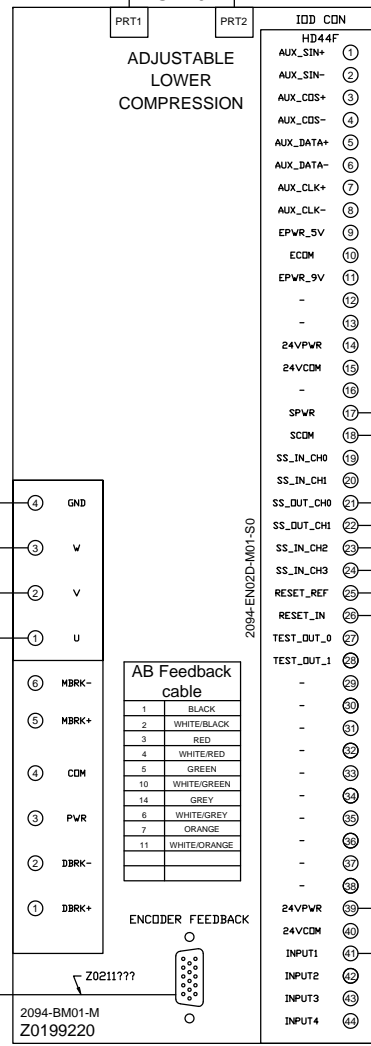
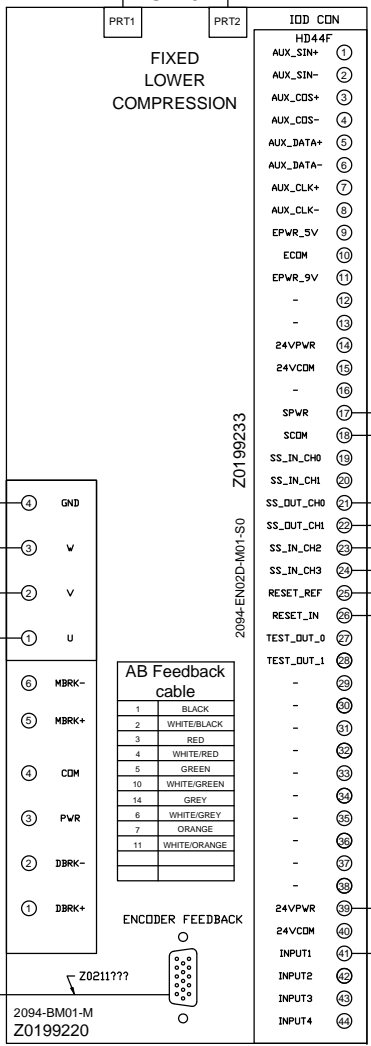
AS-BUILT PLANS

DWG BY: DRO/MDE		TITLE: 194 CPW MALAYSIA KDCP	
REV: 1		DATE: 1-17-12	SHEET: 18 OF 48
3711 IOWA STREET ALEXANDRIA, MN 56308 (320) 763-6043 FAX (320) 763-7859		DRAWING NO: SERVOS 15	



DWG BY:	DRO/MDE		TITLE:	194 CPW MALAYSIA KDCP	
REV:	1		DATE:	1-17-12	SHEET:
		3711 IOWA STREET ALEXANDRIA, MN 56308 (320) 763-8043 FAX (320) 763-7859		DRAWING NO.:	SERVS 17-18

3701 FROM SD18 — ETHERNET — 3701 (38) — ETHERNET — ETHERNET — 3801 ETHERNET — ETHERNET — 3901 TO SD21



AB Feedback cable

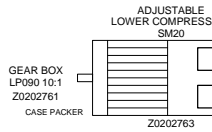
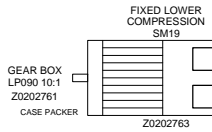
1	BLACK
2	WHITE/BLACK
3	RED
4	WHITE/RED
5	GREEN
10	WHITE/GREEN
14	GREY
6	WHITE/GREY
7	ORANGE
11	WHITE/ORANGE

ENCODER FEEDBACK


AB Feedback cable

1	BLACK
2	WHITE/BLACK
3	RED
4	WHITE/RED
5	GREEN
10	WHITE/GREEN
14	GREY
6	WHITE/GREY
7	ORANGE
11	WHITE/ORANGE

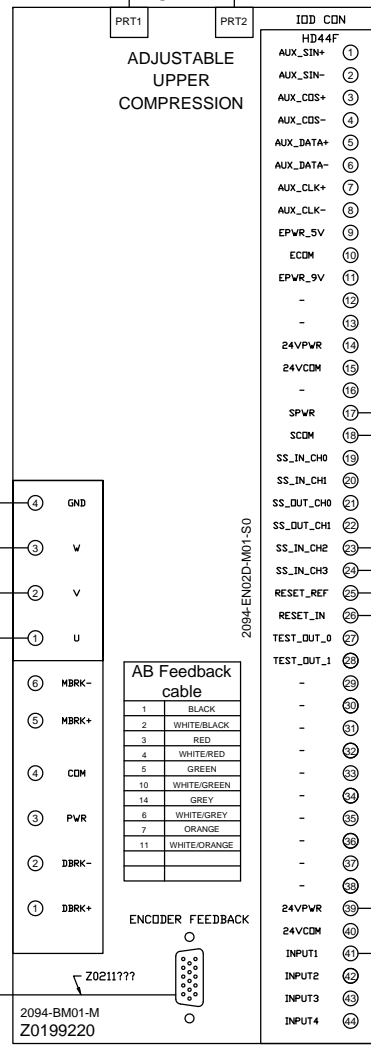
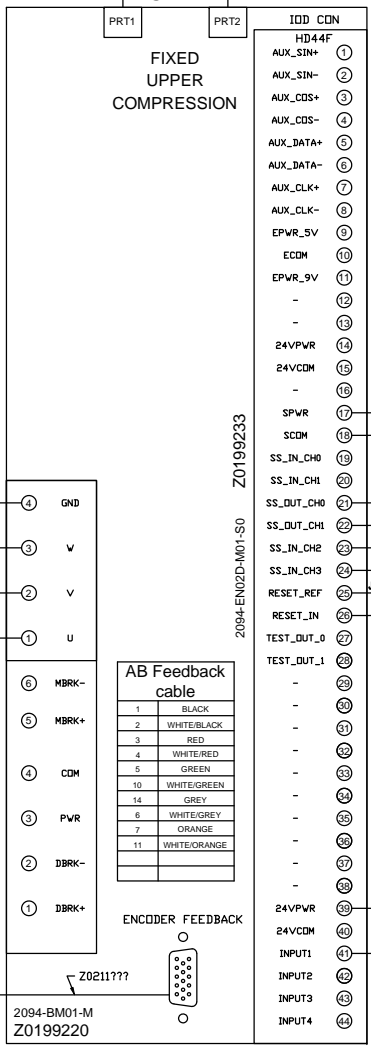
ENCODER FEEDBACK



AS-BUILT PLANS

DWG BY: DRO/MDE	 <p>3711 IOWA STREET ALEXANDRIA, MN 56308 (320) 763-8043 FAX (320) 763-7859</p>	TITLE: 194 CPW MALAYSIA KDCP	
REV: 1		DATE: 1-17-12	SHEET: 20 OF 48
		DRAWING NO: SERVOS 19-20	

3901 FROM SD21 ETHERNET (40) ETHERNET ETHERNET 4001 ETHERNET ETHERNET (41) ETHERNET 4101 TO SD21



**AB Feedback cable**

1	BLACK
2	WHITE/BLACK
3	RED
4	WHITE/RED
5	GREEN
10	WHITE/GREEN
14	GREY
6	WHITE/GREY
7	ORANGE
11	WHITE/ORANGE

**AB Feedback cable**

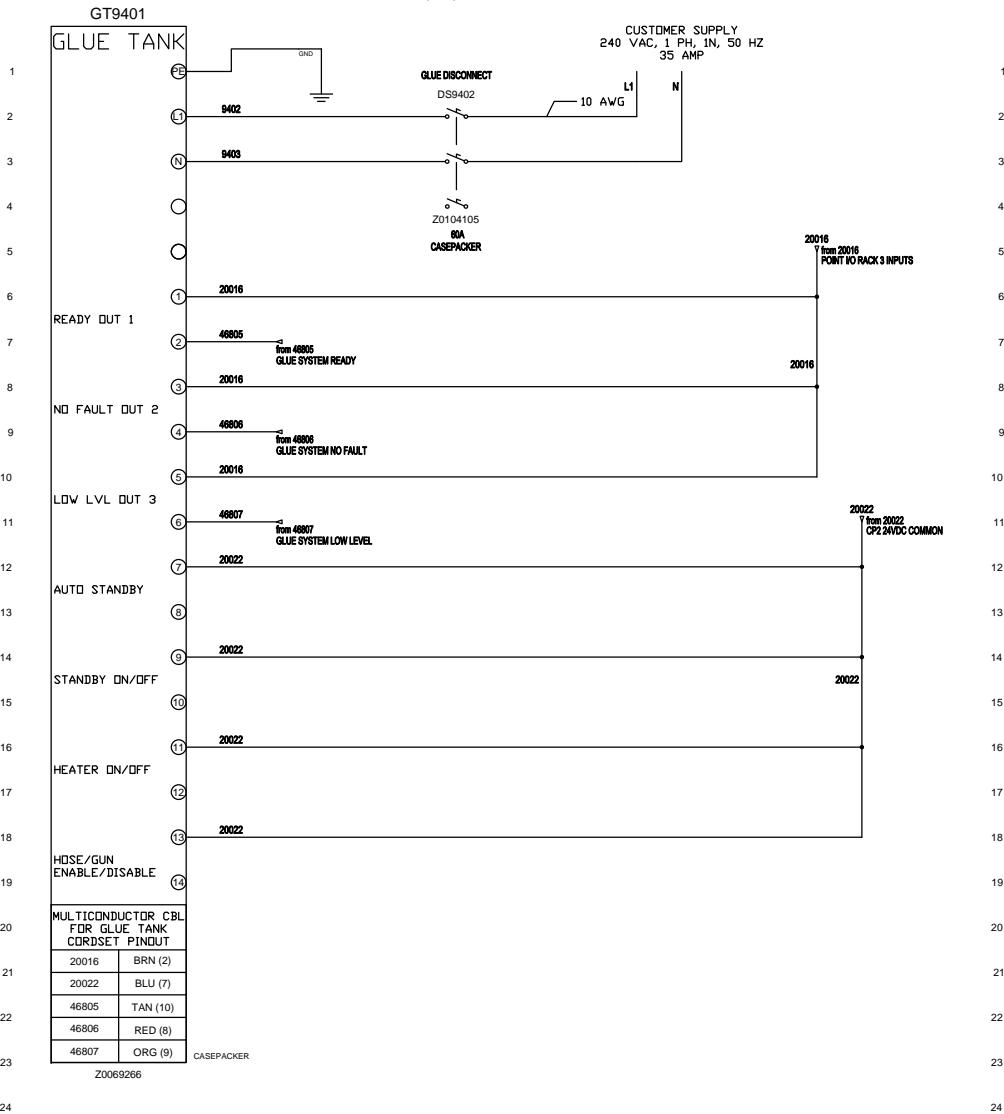
1	BLACK
2	WHITE/BLACK
3	RED
4	WHITE/RED
5	GREEN
10	WHITE/GREEN
14	GREY
6	WHITE/GREY
7	ORANGE
11	WHITE/ORANGE

AS-BUILT PLANS

DWG BY: DRO/MDE		TITLE: 194 CPW MALAYSIA KDCP	
REV: 1		DATE: 1-17-12	SHEET: 21 OF 48
3711 IOWA STREET ALEXANDRIA, MN 56308 (320) 763-8043 FAX (320) 763-7859		DRAWING NO: SERVOS 21-22	

(94)

(95)

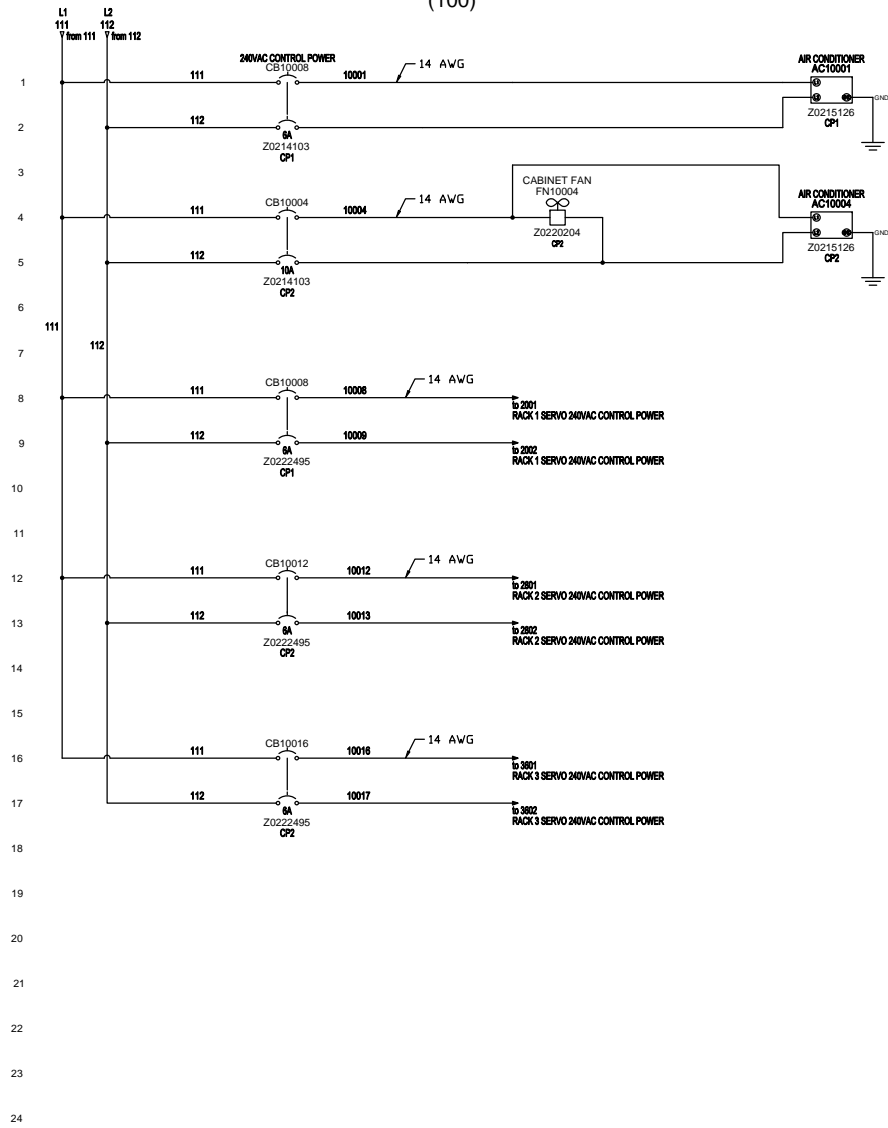


NOTE: ALL WIRE 18 GA. UNLESS OTHERWISE NOTED  
 NOTE: DIN IEC 757 WIRE COLORS ARE AS FOLLOWS UNLESS OTHERWISE NOTED  
 120-415 VAC - BLACK; (NEUTRAL-BROWN)  
 DC - BLUE; DC COMMON - BLUE  
 EXTERNAL VOLTAGES - VIOLET  
 (CP1) INFEED ELECTRICAL ENCLOSURE  
 (CP2) CP MAGAZINE I/O ELECTRICAL ENCLOSURE  
 (HMI) HMI OPERATOR STATION

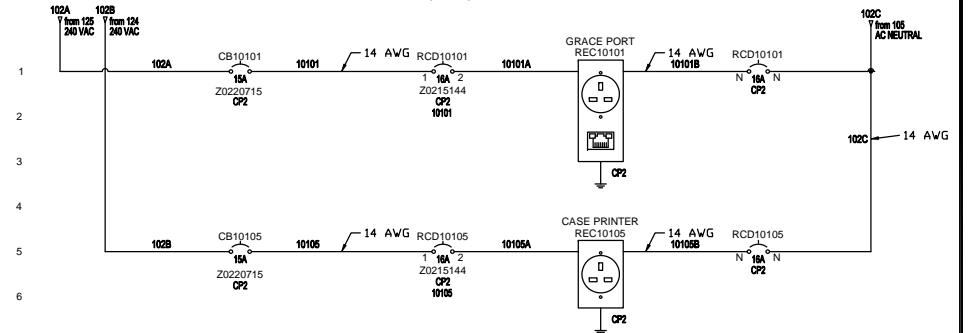
AS-BUILT PLANS

DWG BY:		TITLE: 194 CPW MALAYSIA KDCP	
DRO/MDE:		DATE: 1-17-12	SHEET: 22 OF 48
REV:	3711 IOWA STREET ALEXANDRIA, MN 56308 (320) 763-6043 FAX (320) 763-7859	DRAWING NO: CP HIGH POWER INTEGRATION	
1			

(100)




(101)



NOTE: IDENTIFY HOT AND NEUTRAL CONTACTS, DN REC10101 AND REC10105

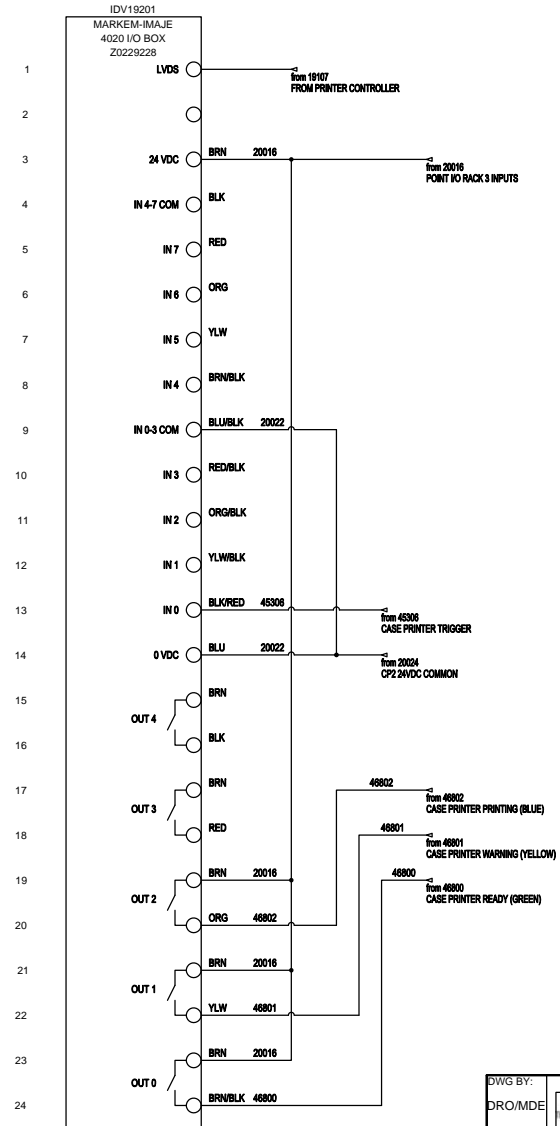
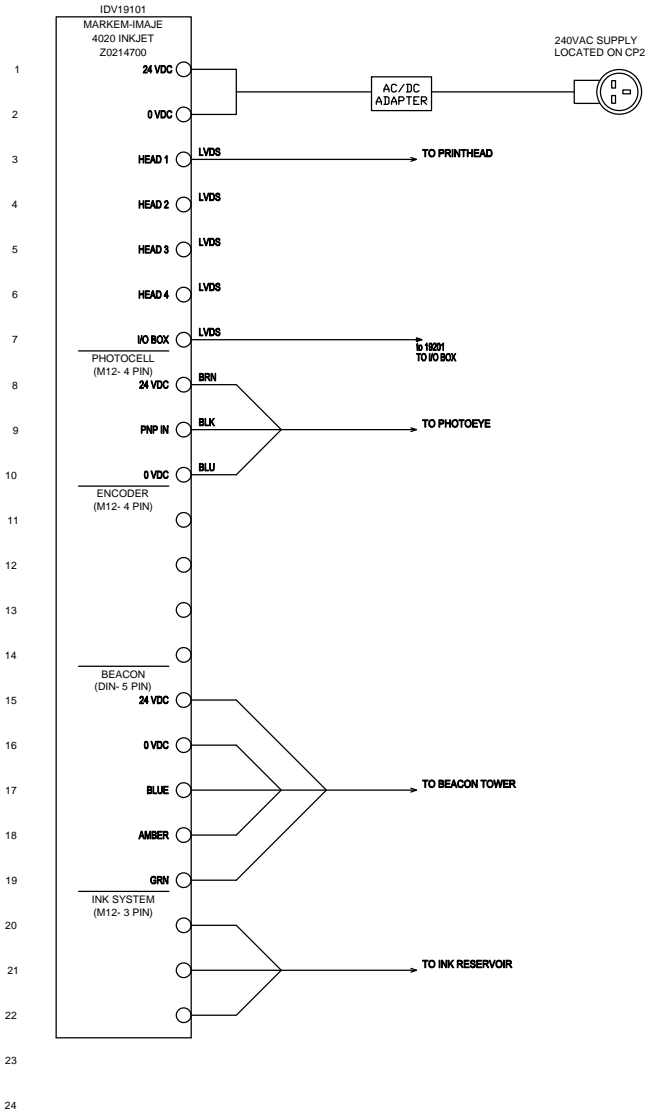
NOTE: ALL WIRE 18 GA. UNLESS OTHERWISE NOTED  
 NOTE: DIN IEC 757 WIRE COLORS ARE AS FOLLOWS UNLESS OTHERWISE NOTED  
 120-415 VAC - BLACK; (NEUTRAL-BROWN)  
 DC - BLUE; DC COMMON - BLUE  
 EXTERNAL VOLTAGES - VIOLET  
 (CP1) INFEED ELECTRICAL ENCLOSURE  
 (CP2) CP MAGAZINE I/O ELECTRICAL ENCLOSURE  
 (HMI) HMI OPERATOR STATION

AS-BUILT PLANS

DWG BY:		TITLE: 194 CPW MALAYSIA KDCP	
DRO/MDE:		DATE: 1-17-12	SHEET: 23 OF 48
REV:	3711 IOWA STREET ALEXANDRIA, MN 56308 (320) 763-8043 FAX (320) 763-7859	DRAWING NO: 240VAC POWER DIST	
1			

(191)

(192)



AS-BUILT PLANS

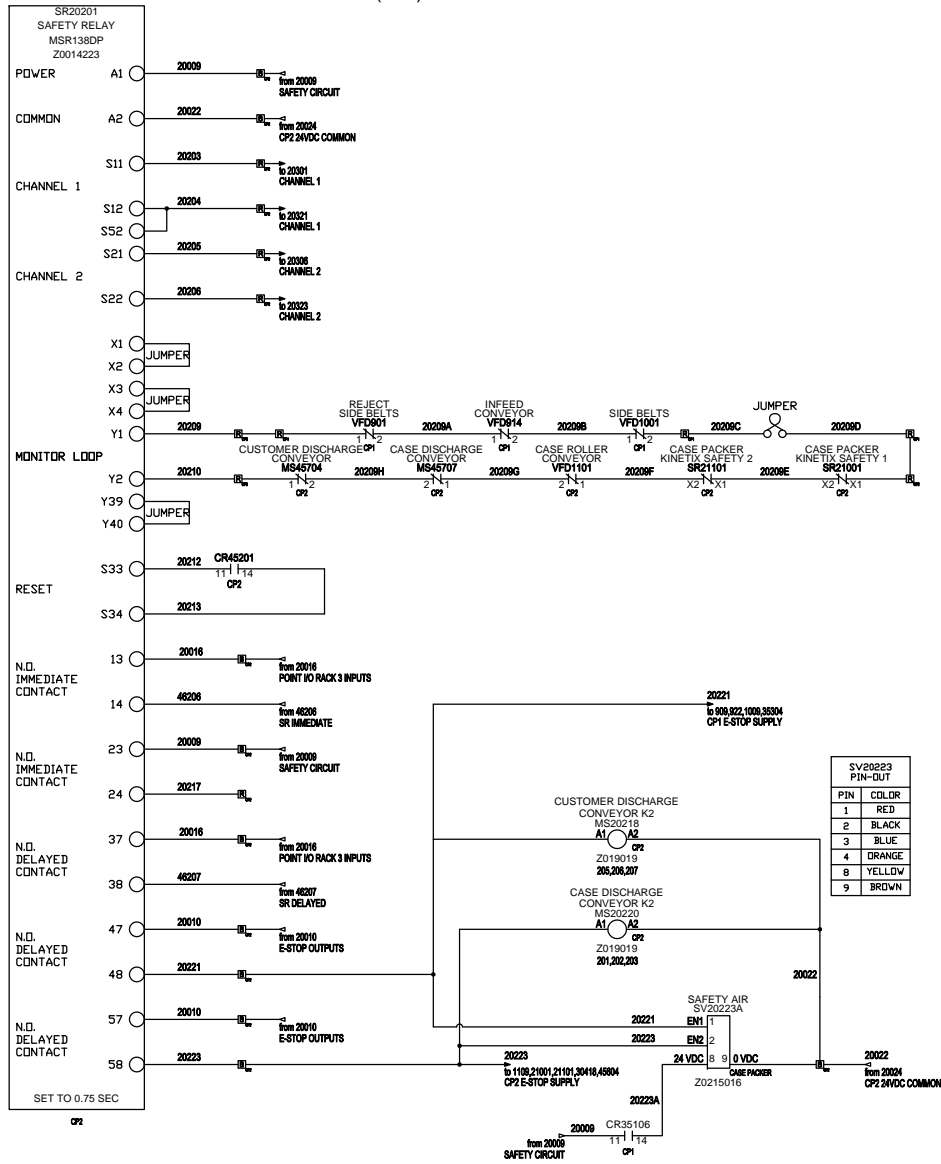
DWG BY: DRO/MDE		TITLE: 194 CPW MALAYSIA KDCP	
REV: 1		DATE: 1-17-12	SHEET: 24 OF 48
3711 IOWA STREET ALEXANDRIA, MN 56308 (320) 763-8043 FAX (320) 763-7859		DRAWING NO: CASE PRINTER INTEGRATION	

1.1 ADDED WIRE 25306 TO IN 0 4-6-12 DRD

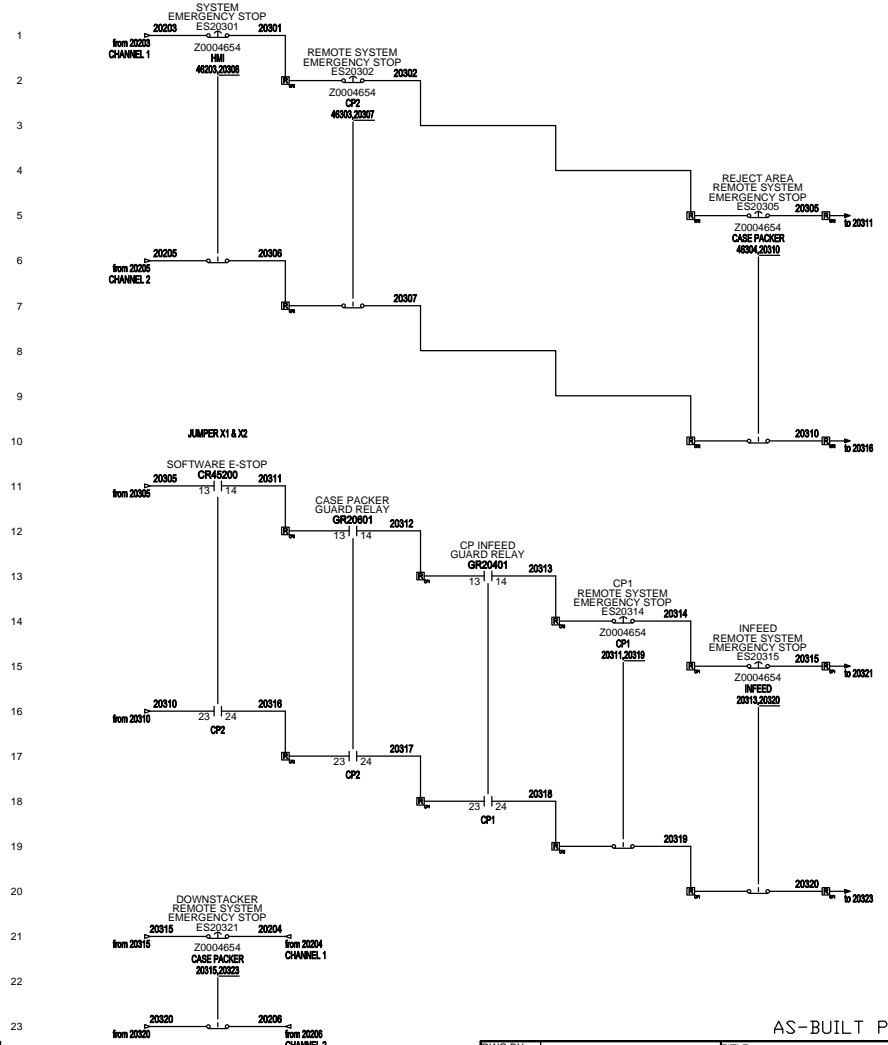




(202)



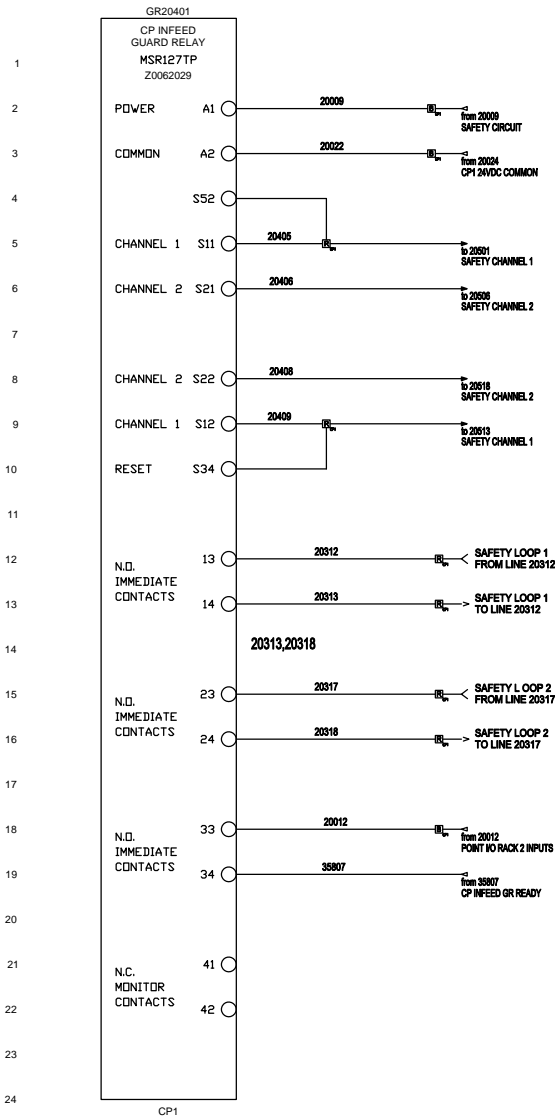
(203)



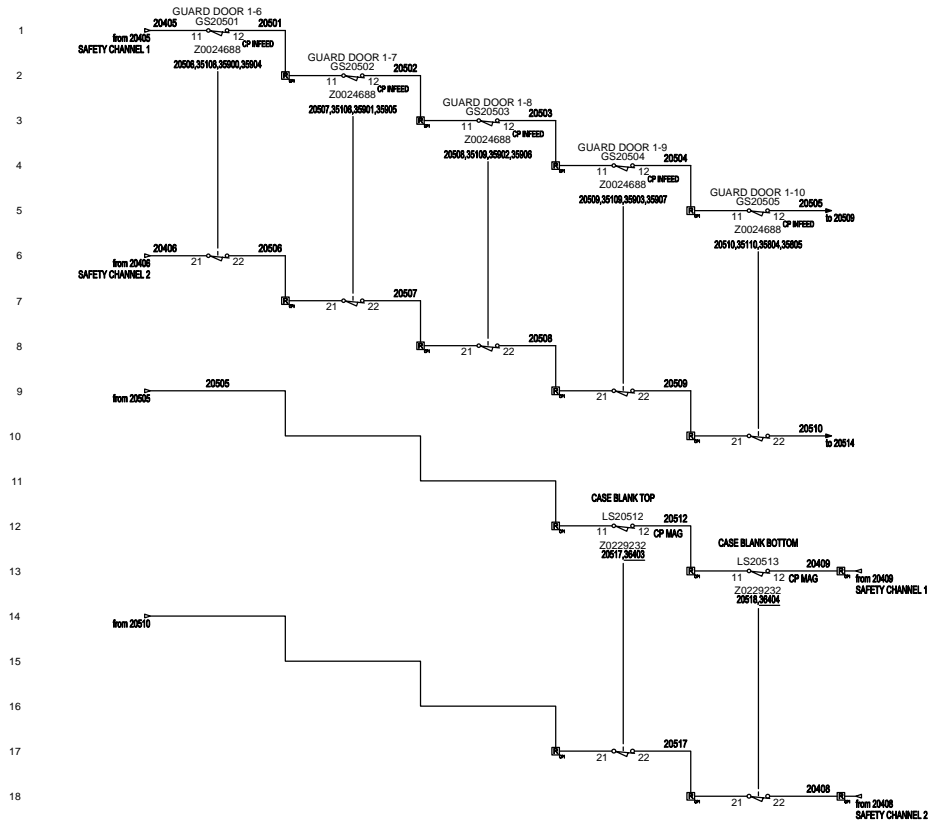
AS-BUILT PLANS

DWG BY: DRO/MDE		TITLE: 194 CPW MALAYSIA KDCP	
REV: 1		DATE: 1-17-12	SHEET: 26 OF 48
3711 IOWA STREET ALEXANDRIA, MN 56308 (320) 763-6043 FAX (320) 763-7859		DRAWING NO: CASE PACKER SAFETY WIRING	

(204)



(205)

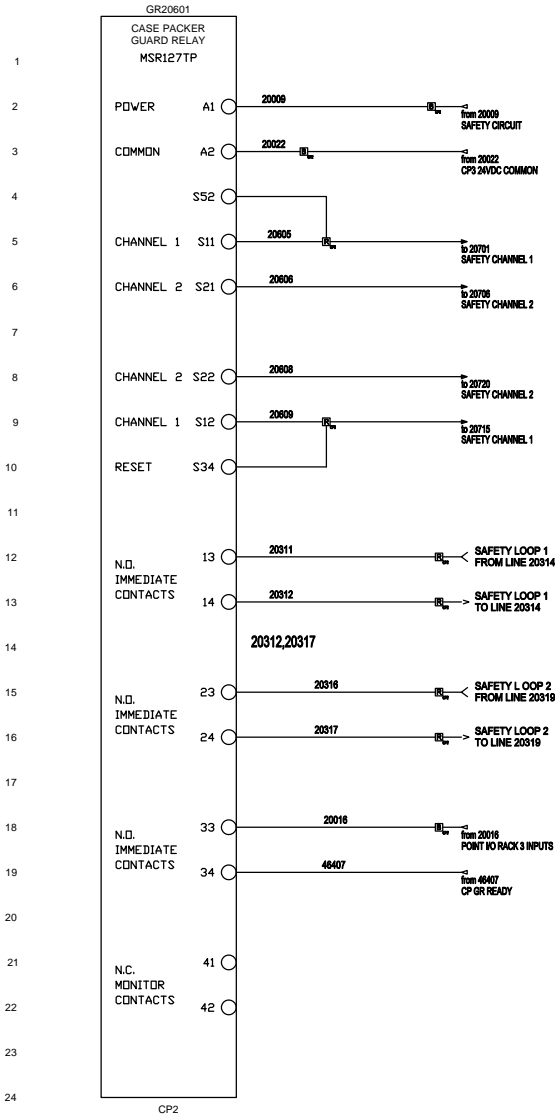


NOTE: ALL WIRE 18 GA. UNLESS OTHERWISE NOTED  
 NOTE: DIN IEC 757 WIRE COLORS ARE AS FOLLOWS UNLESS OTHERWISE NOTED  
 120-415 VAC - BLACK; (NEUTRAL-BROWN)  
 DC - BLUE; DC COMMON - BLUE  
 EXTERNAL VOLTAGES - VIOLET  
 (CP1) INFEEED ELECTRICAL ENCLOSURE  
 (CP2) CP MAGAZINE I/O ELECTRICAL ENCLOSURE  
 (HMI) HMI OPERATOR STATION

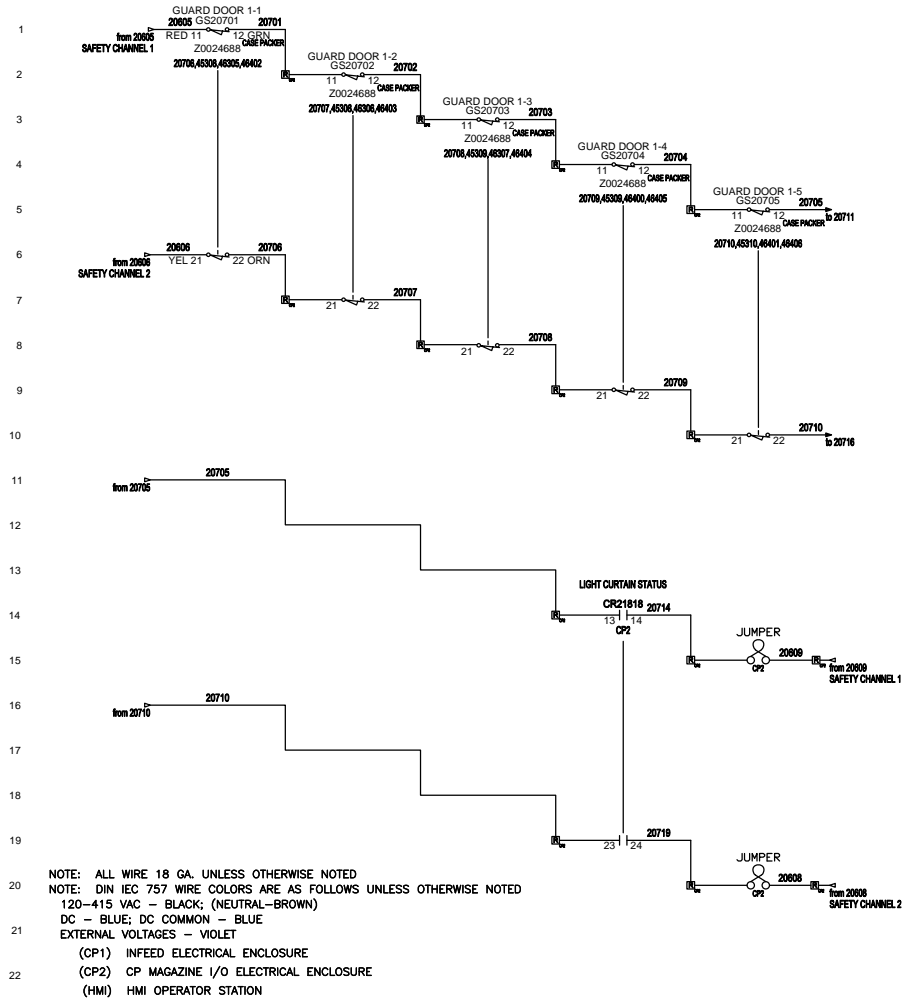
AS-BUILT PLANS

DWG BY: DRO/MDE		TITLE: 194 CPW MALAYSIA KDCP	
REV: 1		DATE: 1-17-12	SHEET: 27 OF 48
3711 IOWA STREET ALEXANDRIA, MN 56308 (320) 763-8043 FAX (320) 763-7859		DRAWING NO: CP INFEEED GUARD DOOR WIRING	

(206)



(207)

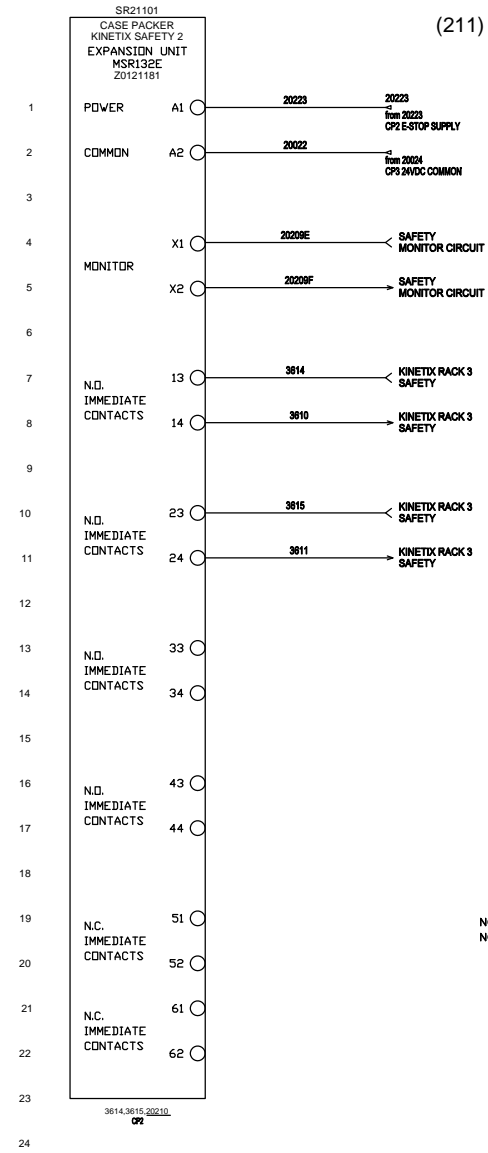
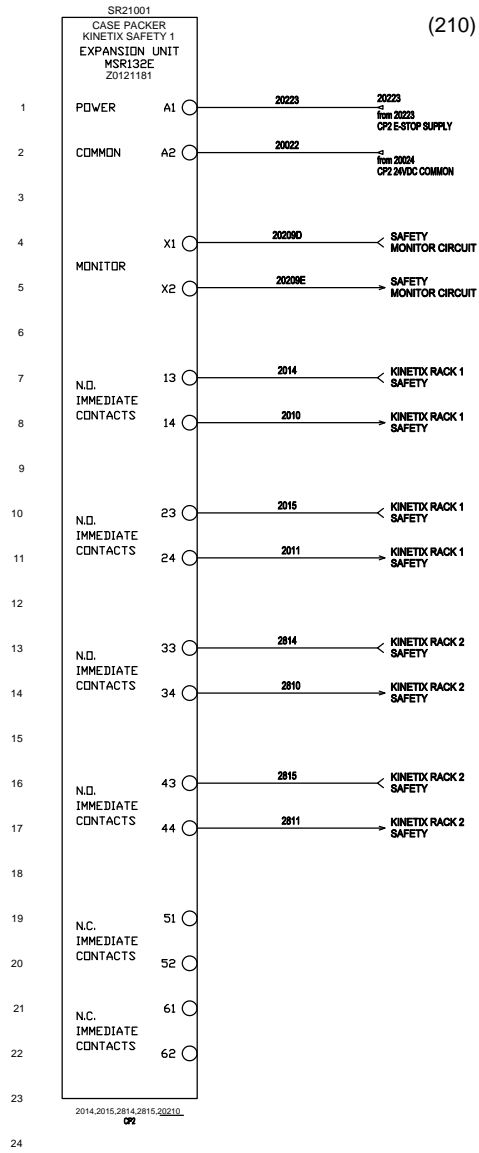


AS-BUILT PLANS

DWG BY:	DRO/MDE	TITLE:	194 CPW MALAYSIA KDCP	
REV:	1	DATE:	1-17-12	SHEET: 28 OF 48
The Agard Group, LLC 3711 IOWA STREET ALEXANDRIA, MN 56308 (320) 763-6043 FAX (320) 763-7859		DRAWING NO: CP MAIN GUARD DOOR WIRING		

(210)

(211)



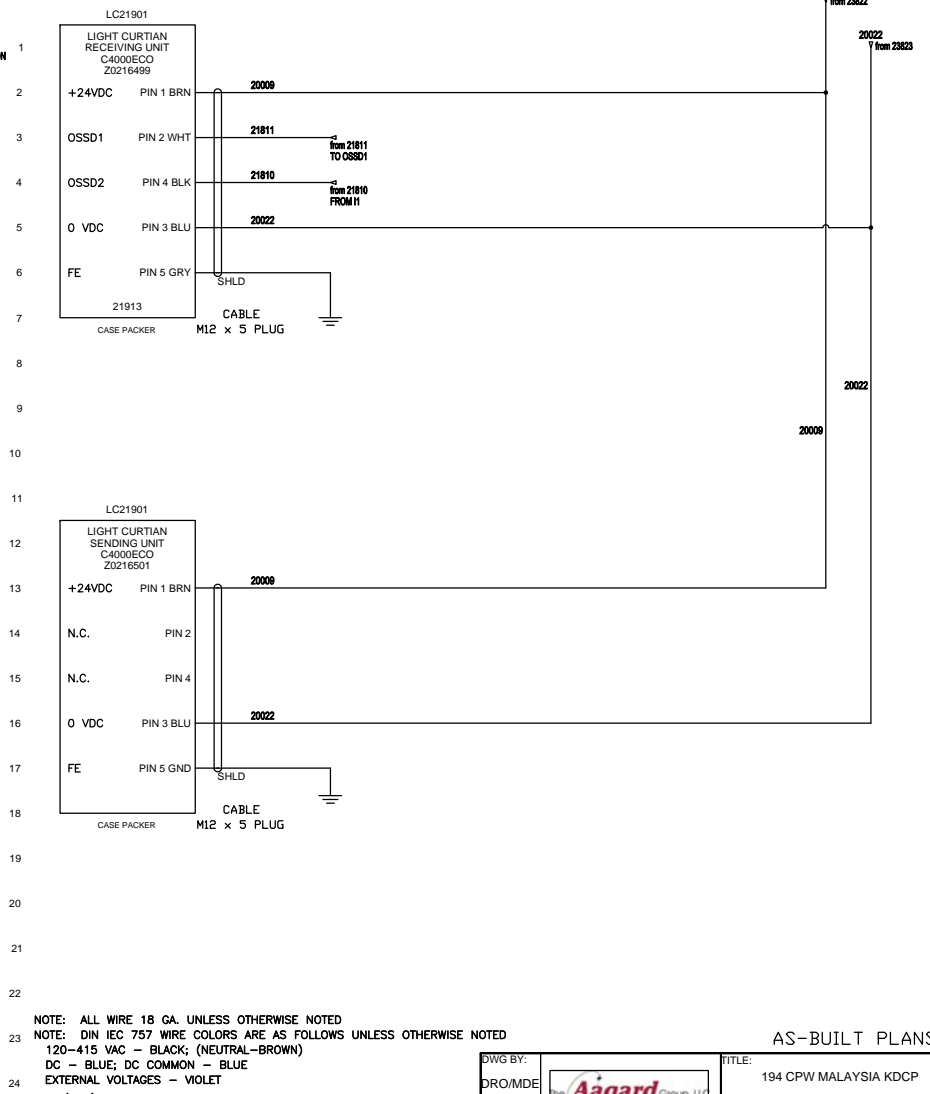
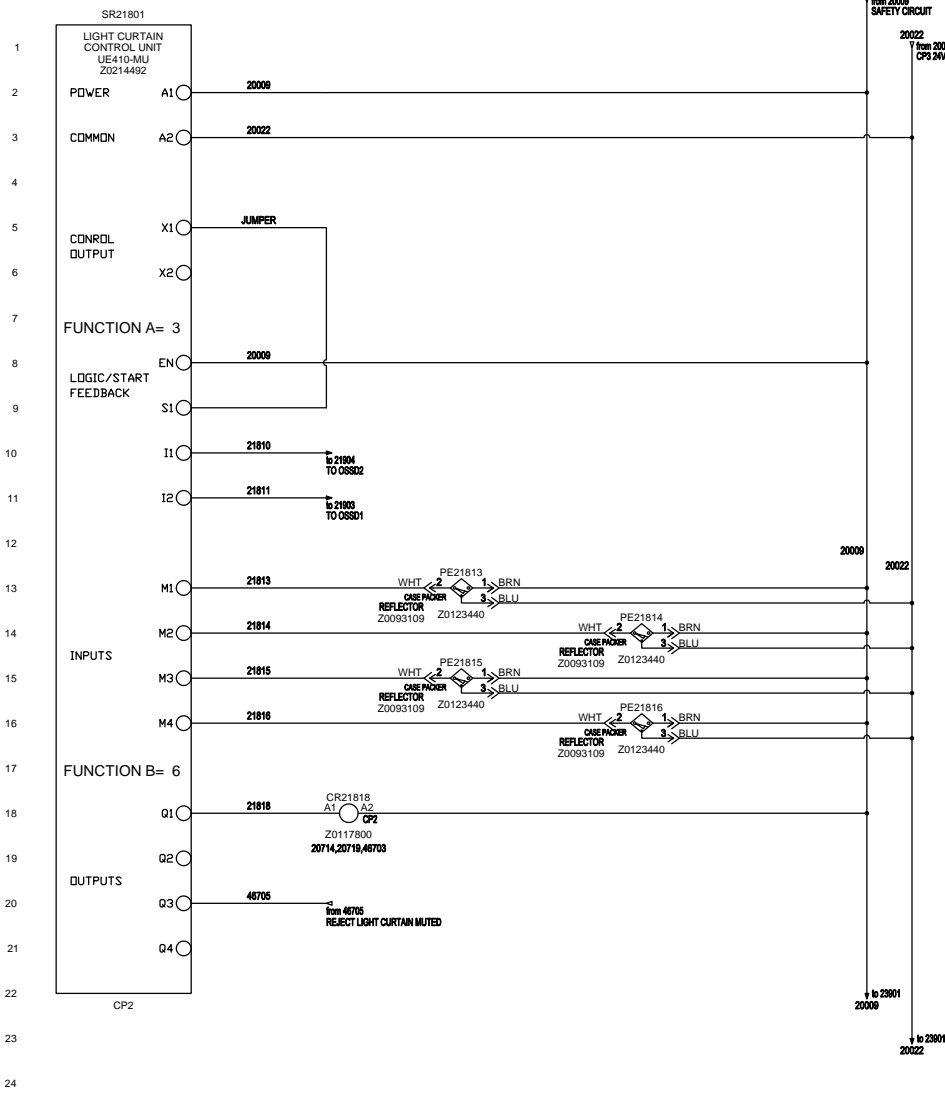
NOTE: ALL WIRE 18 GA. UNLESS OTHERWISE NOTED  
 NOTE: DIN IEC 757 WIRE COLORS ARE AS FOLLOWS UNLESS OTHERWISE NOTED  
 120-415 VAC - BLACK; (NEUTRAL-BROWN)  
 DC - BLUE; DC COMMON - BLUE  
 EXTERNAL VOLTAGES - VIOLET  
 (CP1) INFEED ELECTRICAL ENCLOSURE  
 (CP2) CP MAGAZINE I/O ELECTRICAL ENCLOSURE  
 (HMI) HMI OPERATOR STATION

AS-BUILT PLANS

DWG BY:		TITLE:	194 CPW MALAYSIA KDCP	
DRO/MDE		DATE:	1-17-12	SHEET: 29 OF 48
REV:	1	DRAWING NO:	CASE PACKER SAFETY WIRING 2	
		3711 IOWA STREET ALEXANDRIA, MN 56308 (320) 763-8043 FAX (320) 763-7859		

(218)

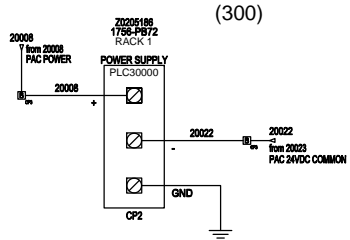
(219)



NOTE: ALL WIRE 18 GA. UNLESS OTHERWISE NOTED  
 NOTE: DIN IEC 757 WIRE COLORS ARE AS FOLLOWS UNLESS OTHERWISE NOTED  
 120-415 VAC - BLACK; (NEUTRAL-BROWN)  
 DC - BLUE; DC COMMON - BLUE  
 EXTERNAL VOLTAGES - VIOLET  
 (CP1) INFEED ELECTRICAL ENCLOSURE  
 (CP2) CP MAGAZINE I/O ELECTRICAL ENCLOSURE  
 (HMI) HMI OPERATOR STATION

AS-BUILT PLANS

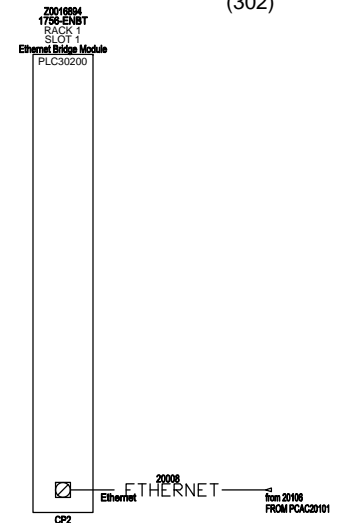
DWG BY:		TITLE: 194 CPW MALAYSIA KDCP	
DRO/MDE		DATE: 1-17-12	SHEET: 30 OF 48
REV: 1	3711 IOWA STREET ALEXANDRIA, MN 56308 (320) 763-8043 FAX (320) 763-7859	DRAWING NO: LIGHT CURTAIN SAFETY WIRING	



(300)



(301)



(302)

0  
1  
2  
3  
4  
5  
6  
7  
8  
9  
10  
11  
12  
13  
14  
15  
16  
17  
18  
19  
20  
21  
22  
23

0  
1  
2  
3  
4  
5  
6  
7  
8  
9  
10  
11  
12  
13  
14  
15  
16  
17  
18  
19  
20  
21  
22  
23

0  
1  
2  
3  
4  
5  
6  
7  
8  
9  
10  
11  
12  
13  
14  
15  
16  
17  
18  
19  
20  
21  
22  
23

AS-BUILT PLANS

DWG BY:		TITLE: 194 CPW MALAYSIA KDCP	
DRO/MDE		DATE: 1-17-12	SHEET: 31 OF 48
REV: 1	3711 IOWA STREET ALEXANDRIA, MN 56308 (320) 763-6043 FAX (320) 763-7859	DRAWING NO: PLC LOCAL 1 SLOTS 0-1	

(303)

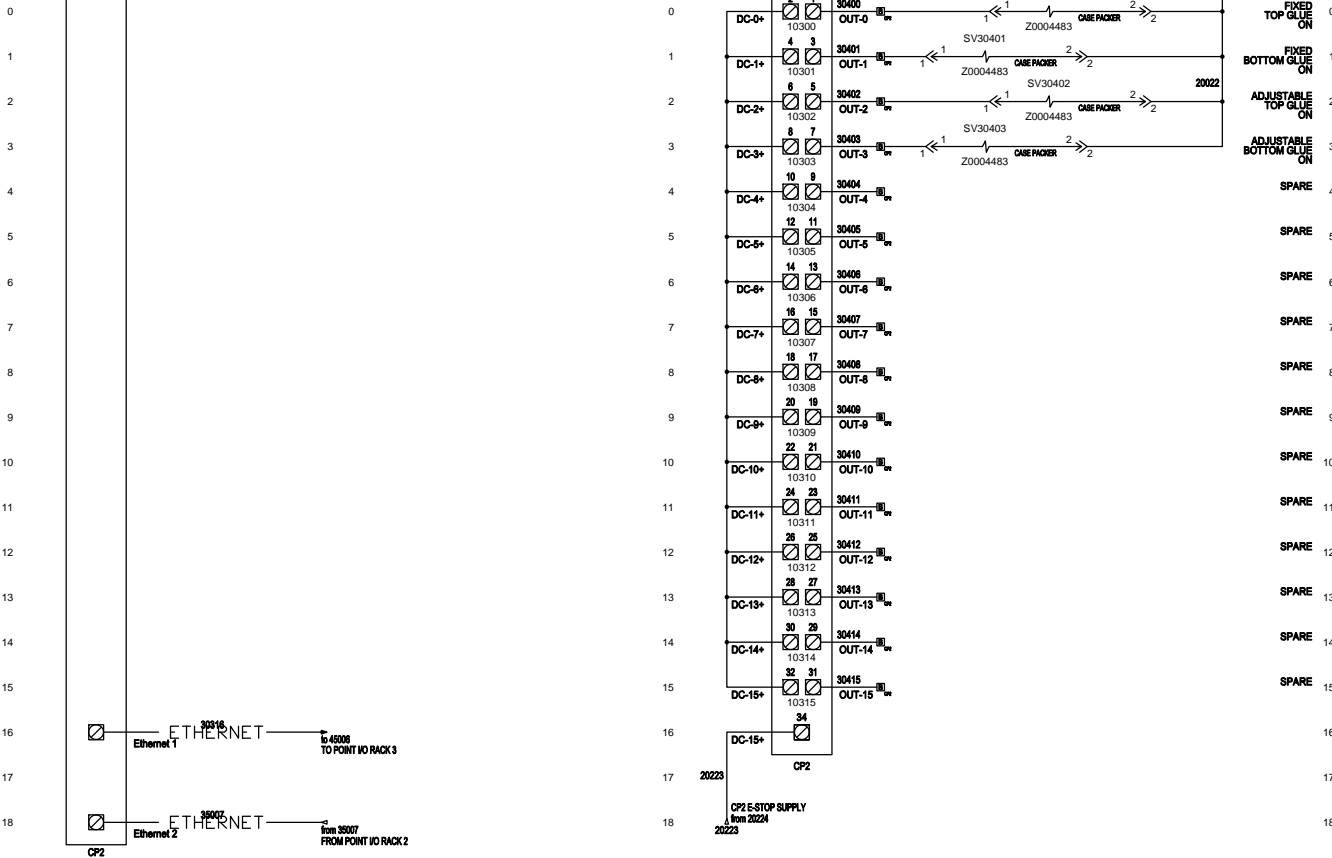
(304)

(305)

Z0194025  
1758-EN51TR  
RACK 1  
SLOT 2  
Ethernet Dual Port Module  
PLC30300

AS  
1758-EN51RS  
RACK 1  
SLOT 1  
10-30VDC 16PT DIGITAL OUTPUTS  
PLC30400

20022  
From 20024  
CP2 24VDC COMMON



NOTE: REMOVEABLE TERMINAL BLOCK, 36 PIN (20192890),  
USED FOR LOCAL ISOLATED OUTPUT MODULE

AS-BUILT PLANS

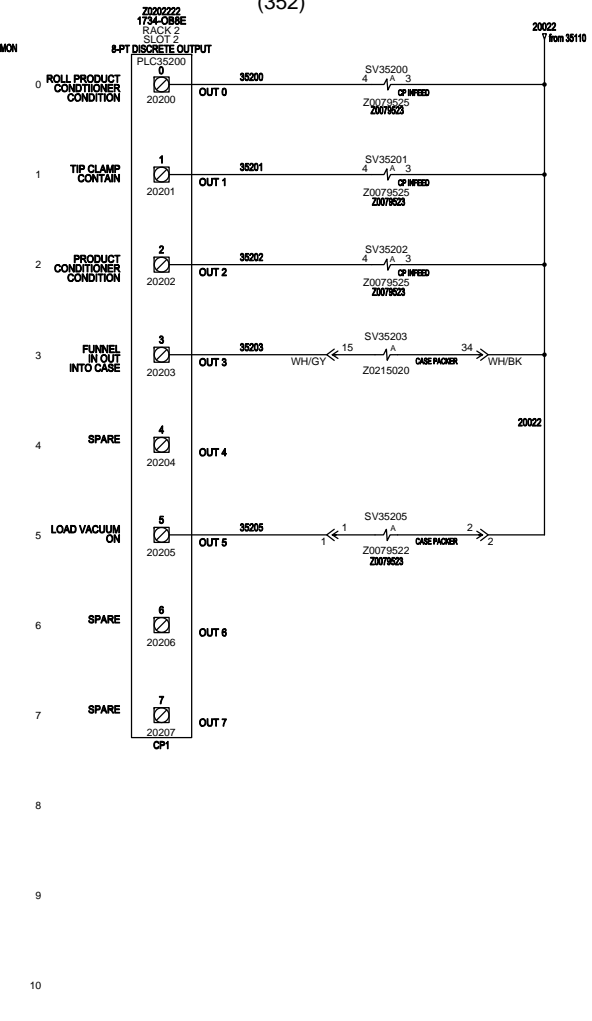
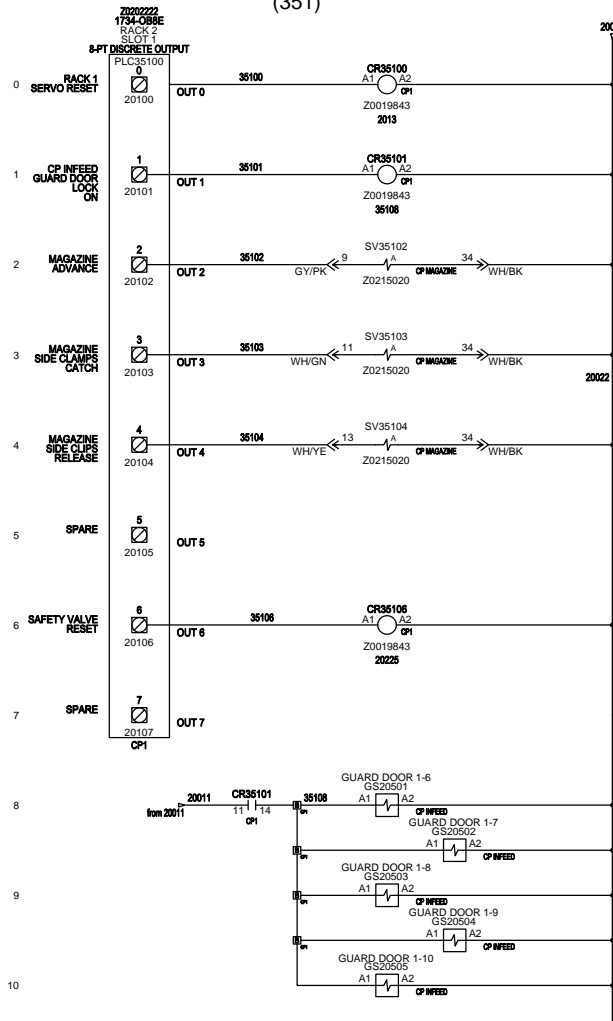
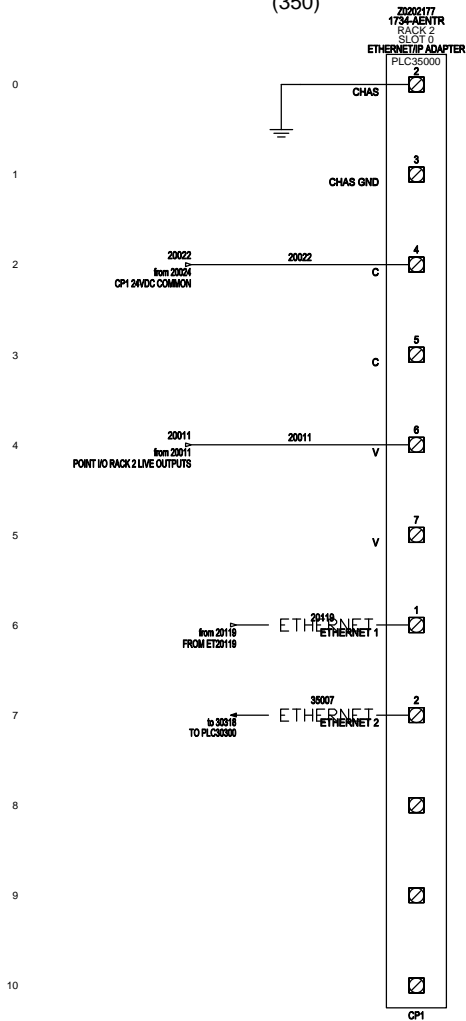
DWG BY:	The <b>Aagard</b> Group, LLC <small>INDUSTRIAL PROCESS ENGINEERS</small>	TITLE: 194 CPW MALAYSIA KDCP	
DRO/MDE		DATE: 1-17-12	SHEET: 32 OF 48
REV: 1	3711 IOWA STREET ALEXANDRIA, MN 56308 (320) 763-6043 FAX (320) 763-7859	DRAWING NO: PLC LOCAL SLOTS 2-3	



(350)

(351)

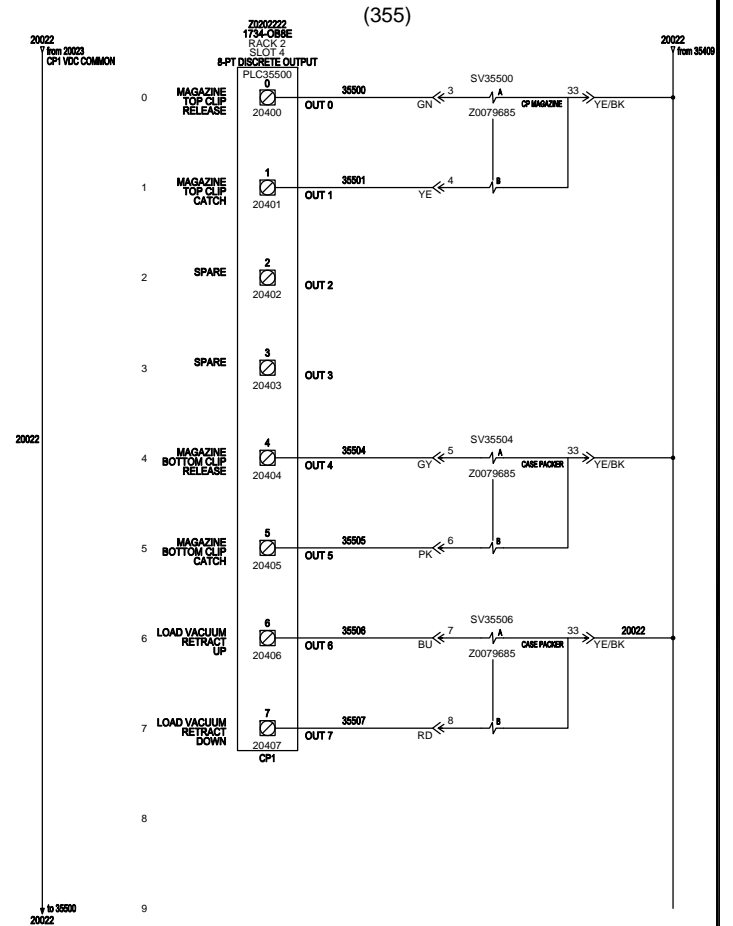
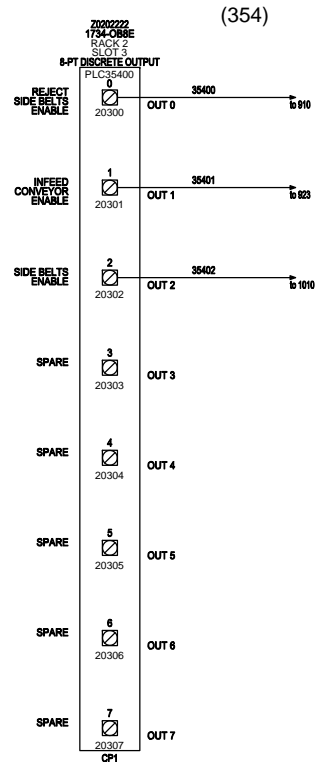
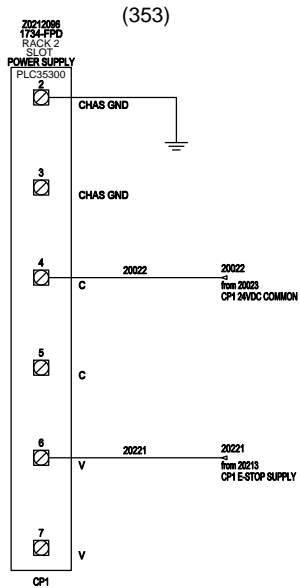
(352)



NOTE: POINT I/O TERMINAL BASE, 8 PT. (20202224), USED FOR ALL REMOTE I/O MODULES

AS-BUILT PLANS

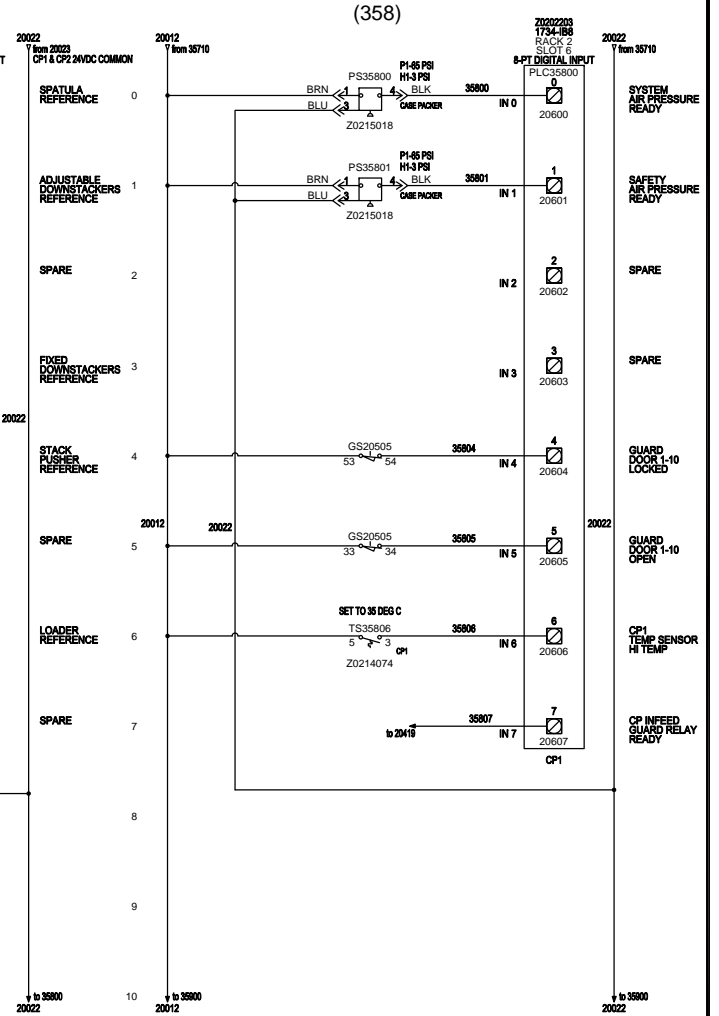
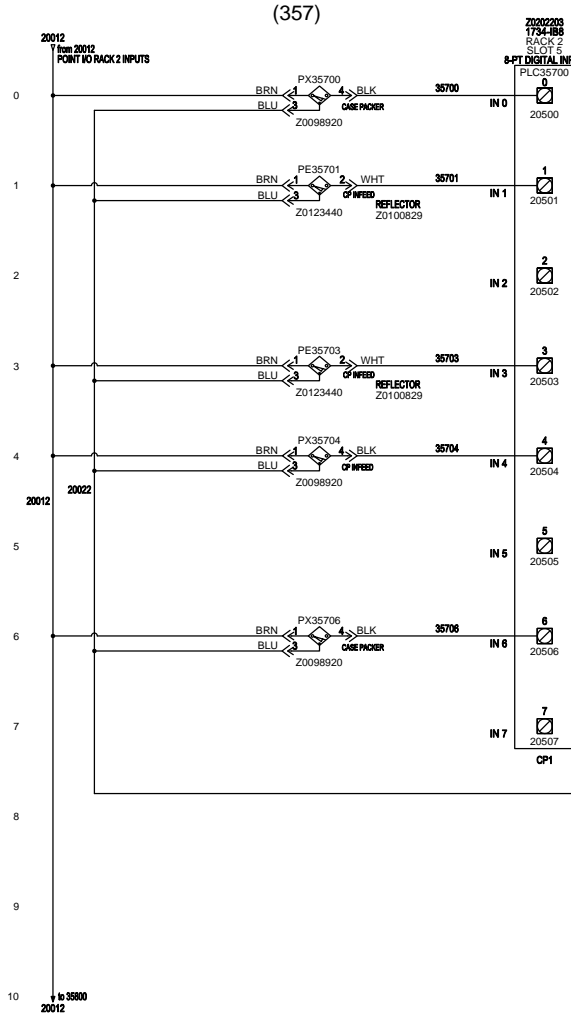
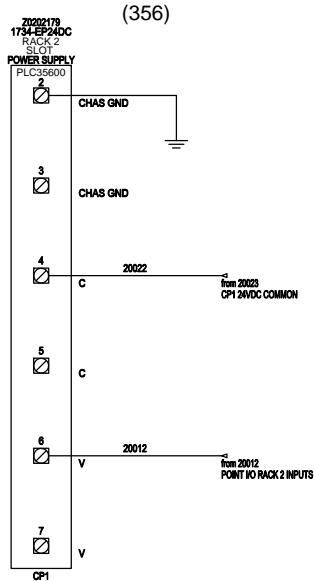
DWG BY:		TITLE: 194 CPW MALAYSIA KDCP	
DRO/MDE		DATE: 1-17-12	SHEET: 33 OF 48
REV: 1	3711 IOWA STREET ALEXANDRIA, MN 56308 (320) 763-8043 FAX (320) 763-7859	DRAWING NO: PLC REMOTE 2 SLOTS 1-2	



NOTE: POINT I/O TERMINAL BASE, 8 PT. (Z0202224),  
USED FOR ALL REMOTE I/O MODULES

AS-BUILT PLANS

DWG BY:		TITLE:	194 CPW MALAYSIA KDCP	
DRO/MDE		DATE:	1-17-12	SHEET: 34 OF 48
REV:	3711 IOWA STREET ALEXANDRIA, MN 56308 (320) 763-8043 FAX (320) 763-7859	DRAWING NO:	PLC REMOTE 2 SLOTS 3-4	
1				



NOTE: POINT I/O TERMINAL BASE, 8 PT. (Z0202224),  
USED FOR ALL REMOTE I/O MODULES

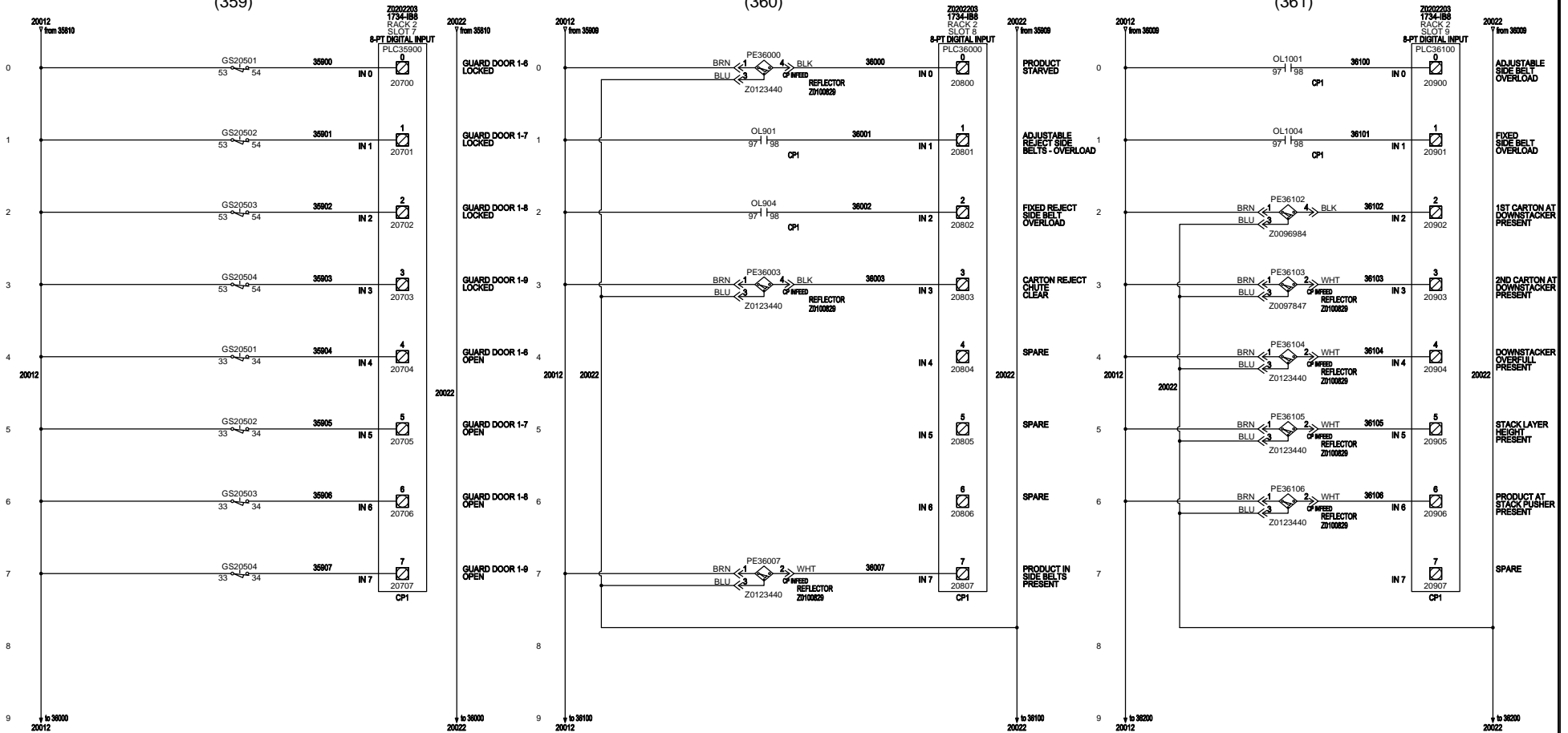
AS-BUILT PLANS

DWG BY:		TITLE:	194 CPW MALAYSIA KDCP	
DRO/MDE		DATE:	1-17-12	SHEET: 35 OF 48
REV:	1	3711 IOWA STREET ALEXANDRIA, MN 56308 (320) 763-8043 FAX (320) 763-7859	DRAWING NO:	PLC REMOTE 2 SLOTS 5-6

(359)

(360)

(361)



NOTE: POINT I/O TERMINAL BASE, 8 PT. (Z0202224),  
USED FOR ALL REMOTE I/O MODULES

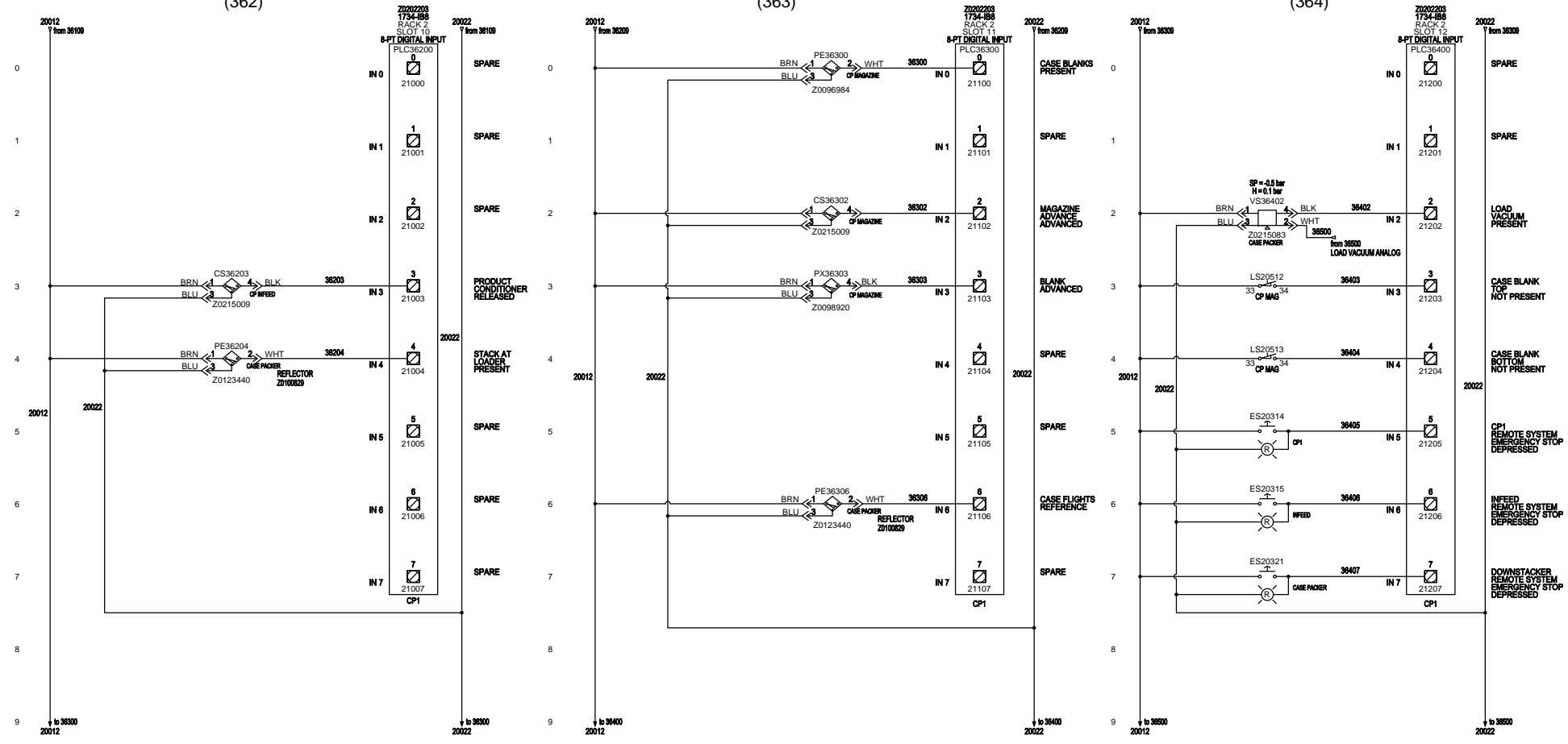
AS-BUILT PLANS

DWG BY:		TITLE:	
DRO/MDE		194 CPW MALAYSIA KDCP	
REV:	3711 IOWA STREET ALEXANDRIA, MN 55308 (320) 763-8043 FAX (320) 763-7859	DATE:	SHEET:
1		1-17-12	36 OF 48
		DRAWING NO:	
		PLC REMOTE 2 SLOTS 7-9	

(362)

(363)

(364)



NOTE: POINT I/O TERMINAL BASE, 8 PT. (Z0202224), USED FOR ALL REMOTE I/O MODULES

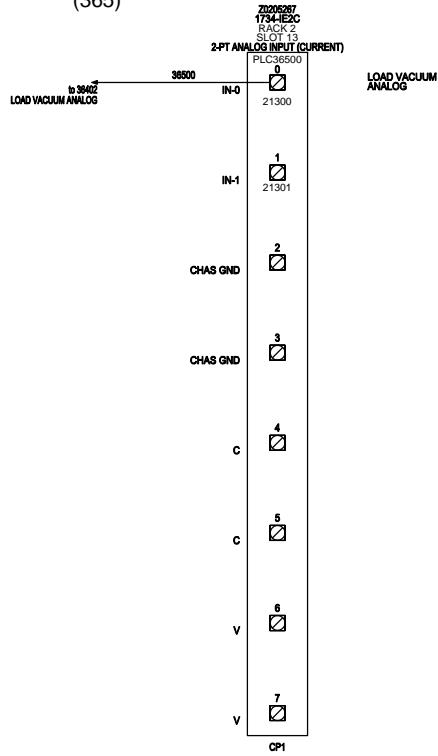
AS-BUILT PLANS

DWG BY:	The Agard Group, LLC <small>INDUSTRIAL DESIGN SERVICES</small>	TITLE: 194 CPW MALAYSIA KDCP	
DRO/MDE		DATE: 1-17-12	SHEET: 37 OF 48
REV: 1	3711 IOWA STREET ALEXANDRIA, MN 56308 (320) 763-8043 FAX (320) 763-7859	DRAWING NO: PLC REMOTE 2 SLOT 10-12	

(365)

(366)

(367)

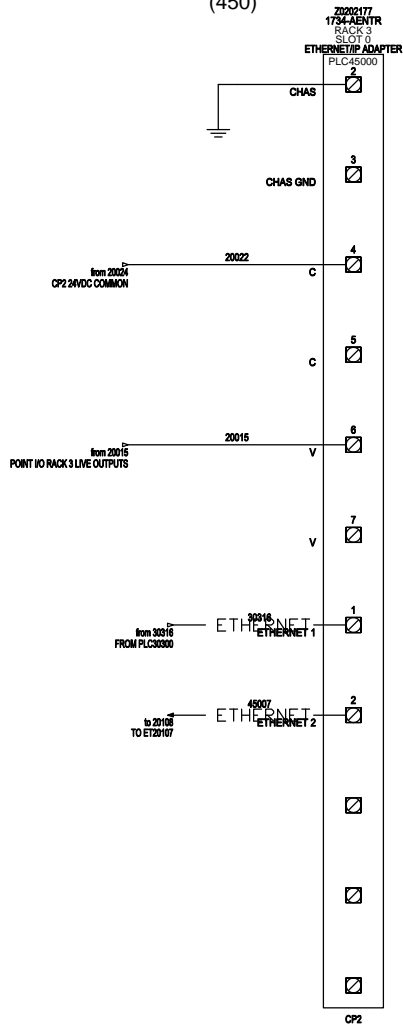


NOTE: POINT I/O TERMINAL BASE, 8 PT. (Z0202224),  
USED FOR ALL REMOTE I/O MODULES

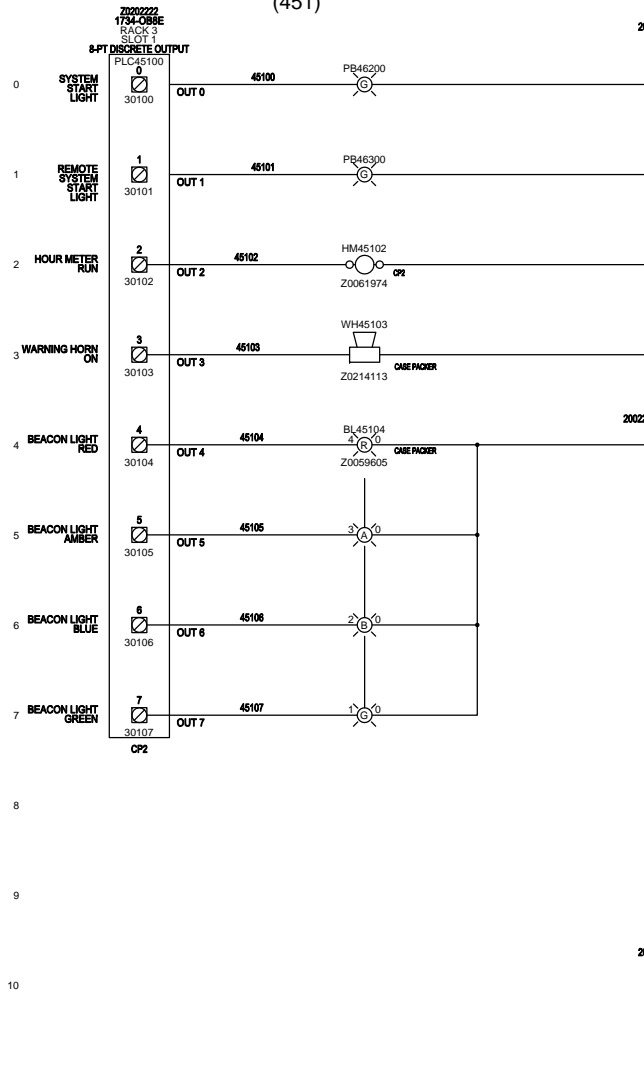
AS-BUILT PLANS

DWG BY:		TITLE:	
DRO/MDE		194 CPW MALAYSIA KDCP	
REV:	3711 IOWA STREET ALEXANDRIA, MN 56308 (320) 763-8043 FAX (320) 763-7859	DATE:	SHEET:
1		1-17-12	38 OF 48
		DRAWING NO:	
		PLC REMOTE 2 SLOTS 13	

(450)

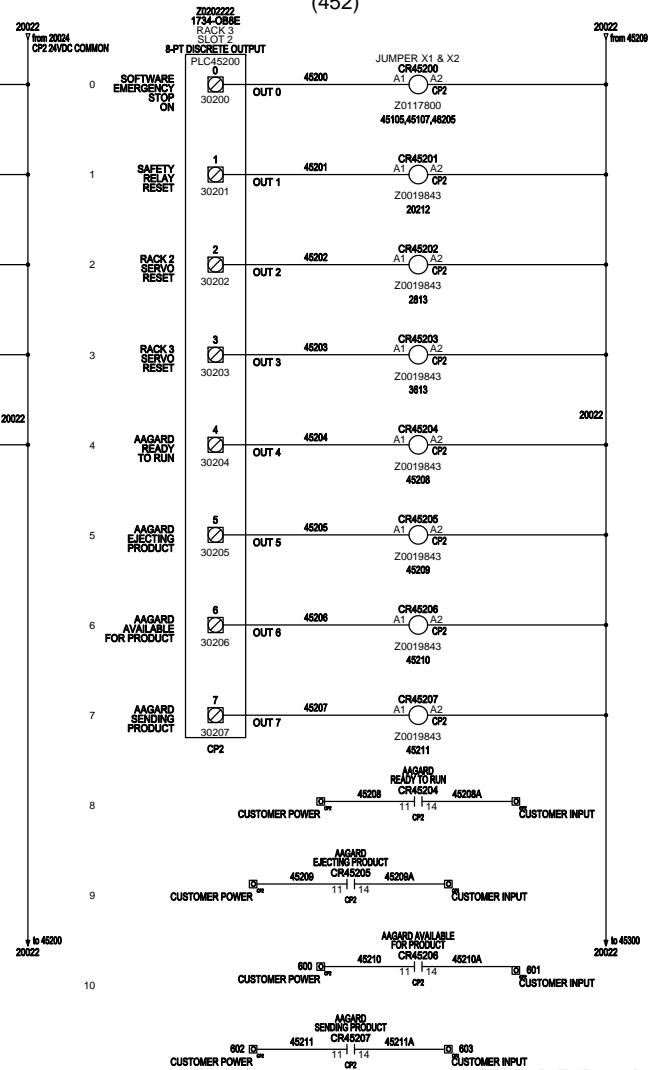


(451)



NOTE: POINT I/O TERMINAL BASE, 8 PT. (Z0202224), USED FOR ALL REMOTE I/O MODULES

(452)



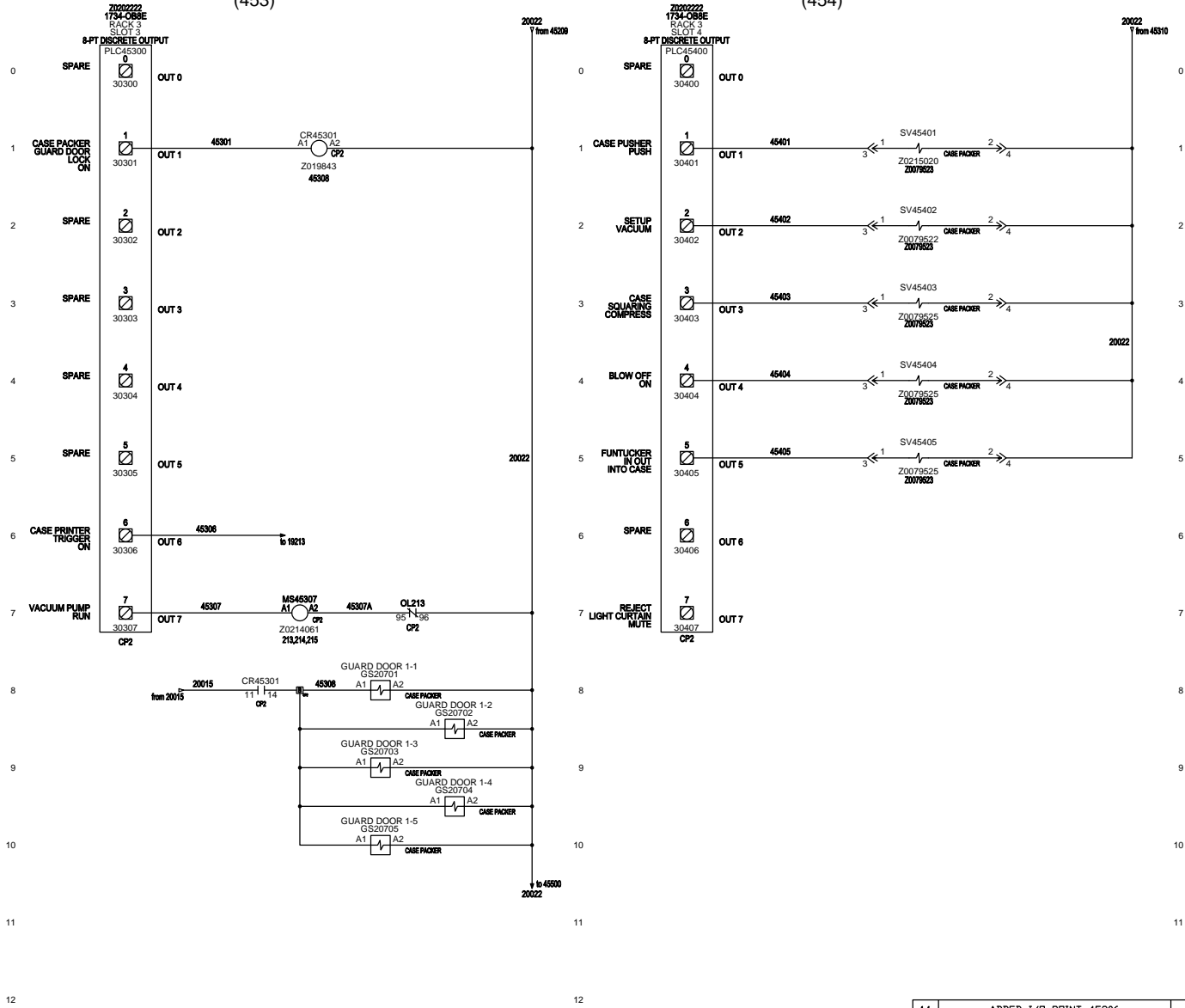
**AS - BUILT PLANS**

DWG BY:		TITLE: 194 CPW MALAYSIA KDCP	
DRO/MDE		DATE: 1-17-12	SHEET: 39 OF 48
REV: 1	3711 IOWA STREET ALEXANDRIA, MN 55308 (320) 763-8043 FAX (320) 763-7859	DRAWING NO.: PLC REMOTE 3 SLOT 1-2	

(453)

(454)

(455)



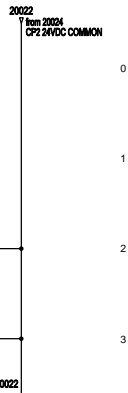
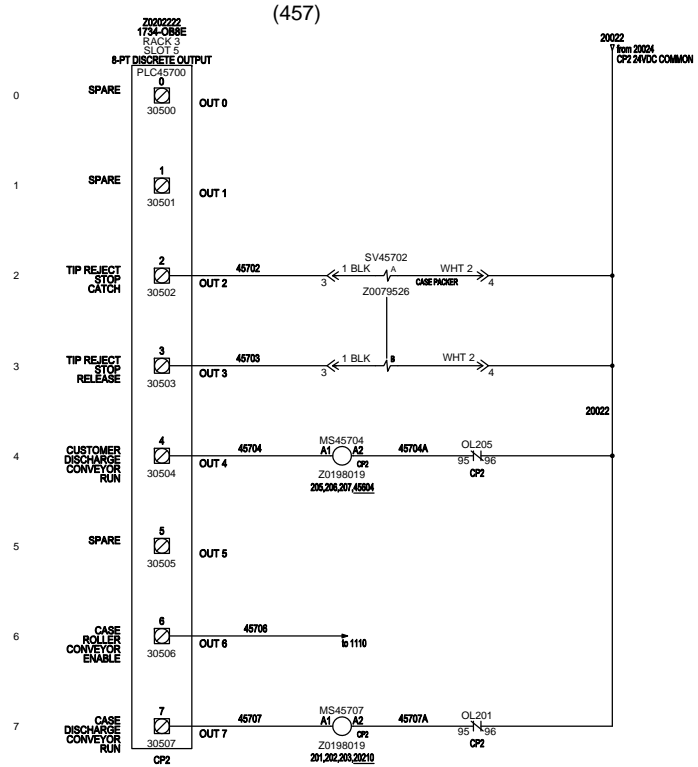
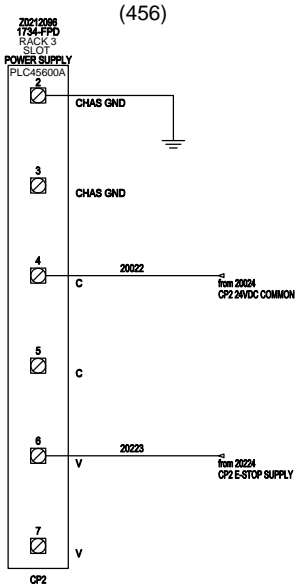
NOTE: POINT I/O TERMINAL BASE, 8 PT. (Z0202224), USED FOR ALL REMOTE I/O MODULES

AS-BUILT PLANS

DWG BY:	DRO/MDE	REV:	1	DATE:	1-17-12	SHEET:	40 OF 48
The <b>Aagard</b> Group, LLC		3711 IOWA STREET ALEXANDRIA, MN 56308 (320) 763-8043 FAX (320) 763-7859		194 CPW MALAYSIA KDCP			
		1.1		DRAWING NO: PLC REMOTE 3 SLOTS 3-4			

1.1	ADDED I/O POINT 45306	4-6-12	DRD
1.1	REMOVED I/O POINT 45407	4-6-12	DRD

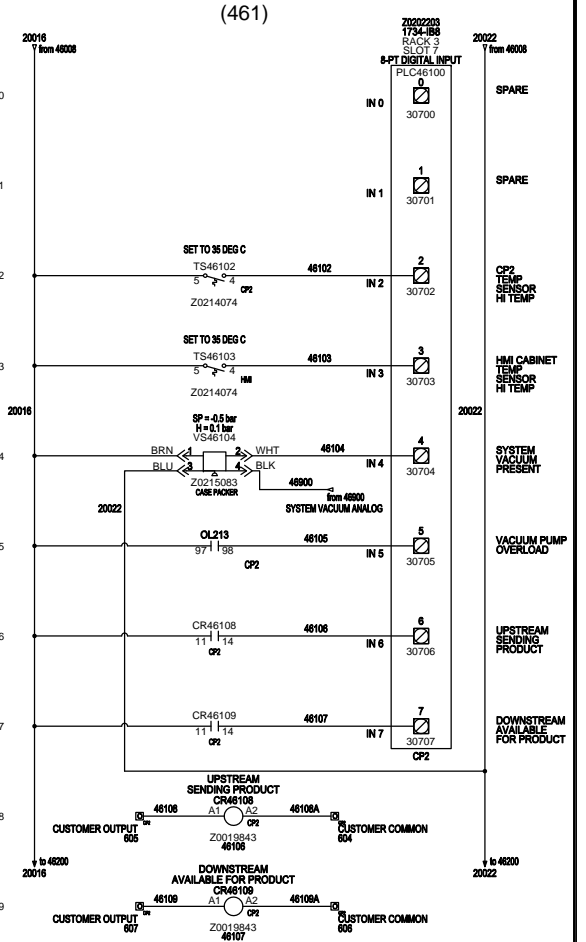
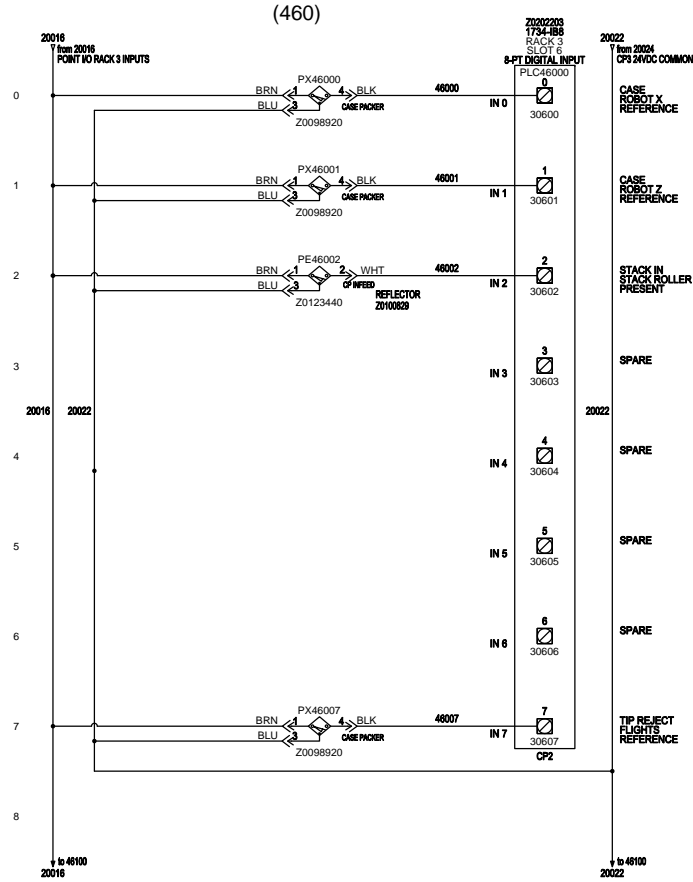
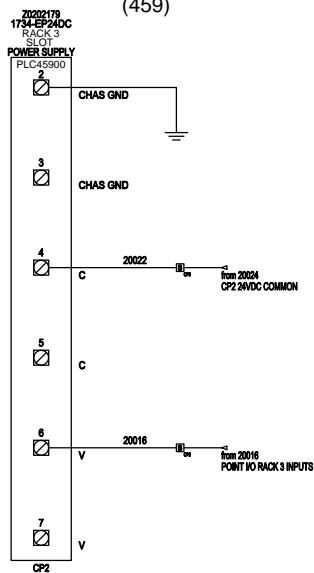




NOTE: POINT I/O TERMINAL BASE, 8 PT. (Z0202224), USED FOR ALL REMOTE I/O MODULES

AS-BUILT PLANS

DWG BY:		TITLE: 194 CPW MALAYSIA KDCP	
DRO/MDE:		DATE: 1-17-12	SHEET: 41 OF 48
REV: 1	3711 IOWA STREET ALEXANDRIA, MN 56308 (320) 763-8043 FAX (320) 763-7859	DRAWING NO: PLC REMOTE 3 SLOTS 5	



NOTE: POINT I/O TERMINAL BASE, 8 PT. (Z0202224), USED FOR ALL REMOTE I/O MODULES

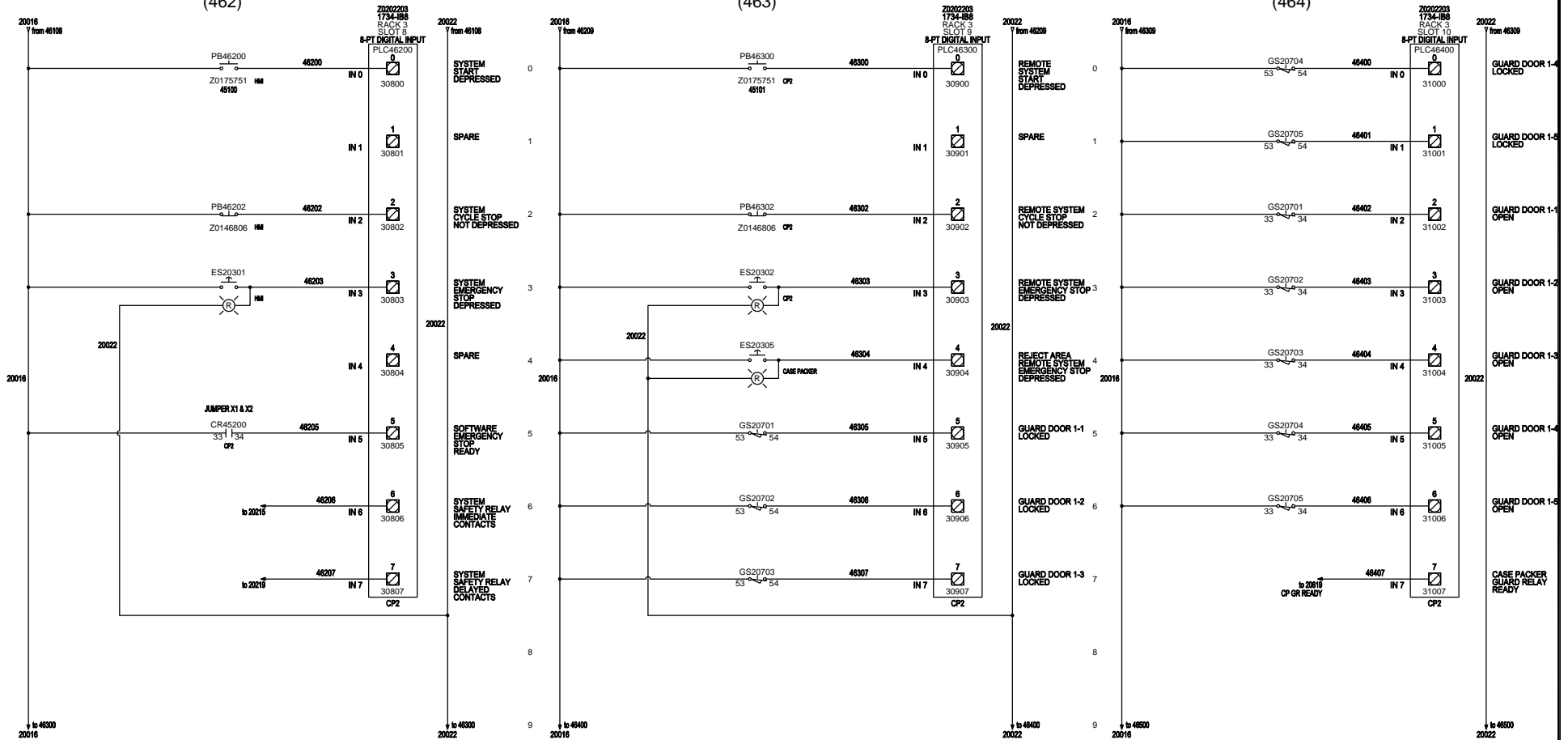
AS-BUILT PLANS

DWG BY: DRO/MDE		TITLE: 194 CPW MALAYSIA KDCP	
REV: 1		DATE: 1-17-12	SHEET: 42 OF 48
3711 IOWA STREET ALEXANDRIA, MN 55308 (320) 763-8043 FAX (320) 763-7859		DRAWING NO: PLC REMOTE 3 SLOTS 6-7	

(462)

(463)

(464)



NOTE: POINT I/O TERMINAL BASE, 8 PT. (Z0202224), USED FOR ALL REMOTE I/O MODULES

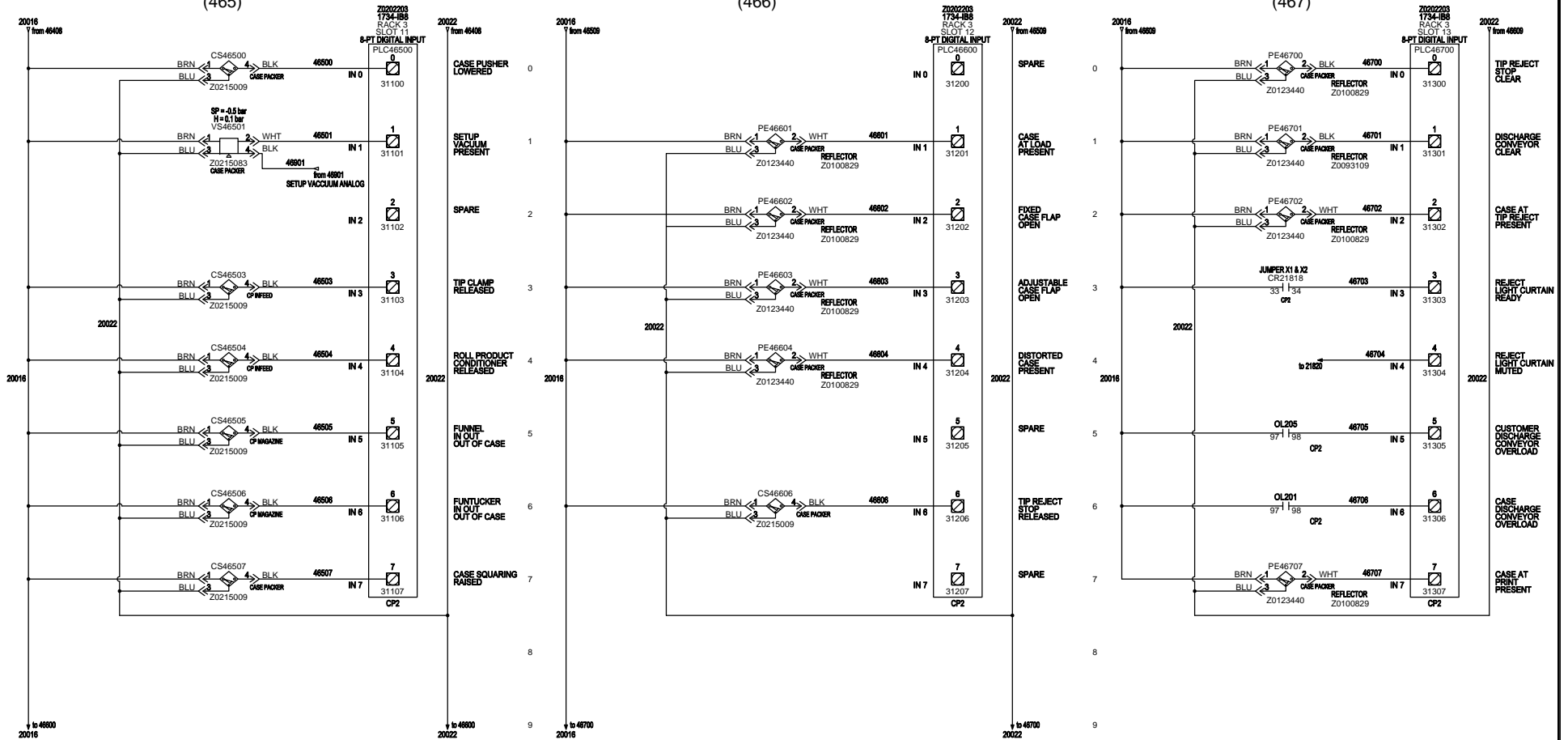
AS-BUILT PLANS

DWG BY:	The Aagard Group, LLC <small>INDUSTRIAL DESIGN ENGINEERS</small>	TITLE:	
DRO/MDE		194 CPW MALAYSIA KDCP	
REV:	3711 IOWA STREET ALEXANDRIA, MN 56308 (320) 763-8043 FAX (320) 763-7859	DATE:	SHEET:
1		1-17-12	43 OF 48
		DRAWING NO:	
		PLC REMOTE 3 SLOTS 8-10	

(465)


(466)

(467)

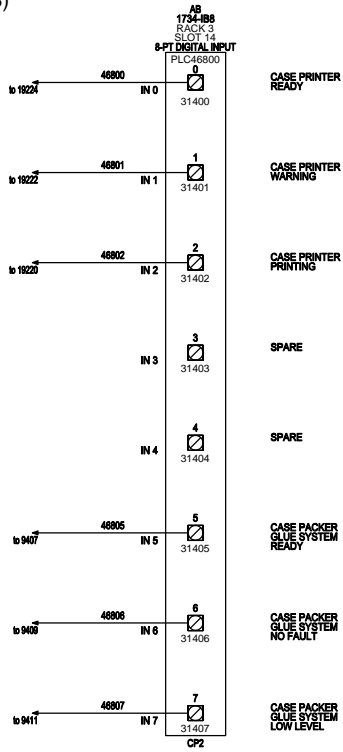


NOTE: POINT I/O TERMINAL BASE, 8 PT. (Z0202224), USED FOR ALL REMOTE I/O MODULES

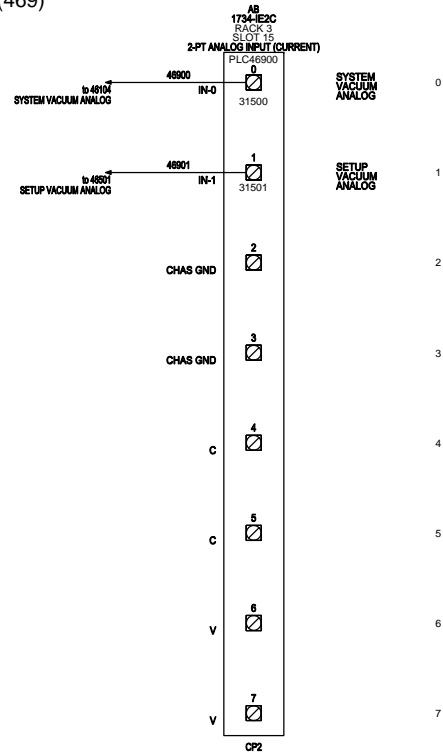
AS-BUILT PLANS

DWG BY:		TITLE:	
DRO/MDE		194 CPW MALAYSIA KDCP	
REV:	3711 IOWA STREET ALEXANDRIA, MN 56308 (320) 763-8043 FAX (320) 763-7859	DATE:	SHEET:
1		1-17-12	44 OF 48
		DRAWING NO:	
		PLC REMOTE 3 SLOTS 11-13	

(468)



(469)



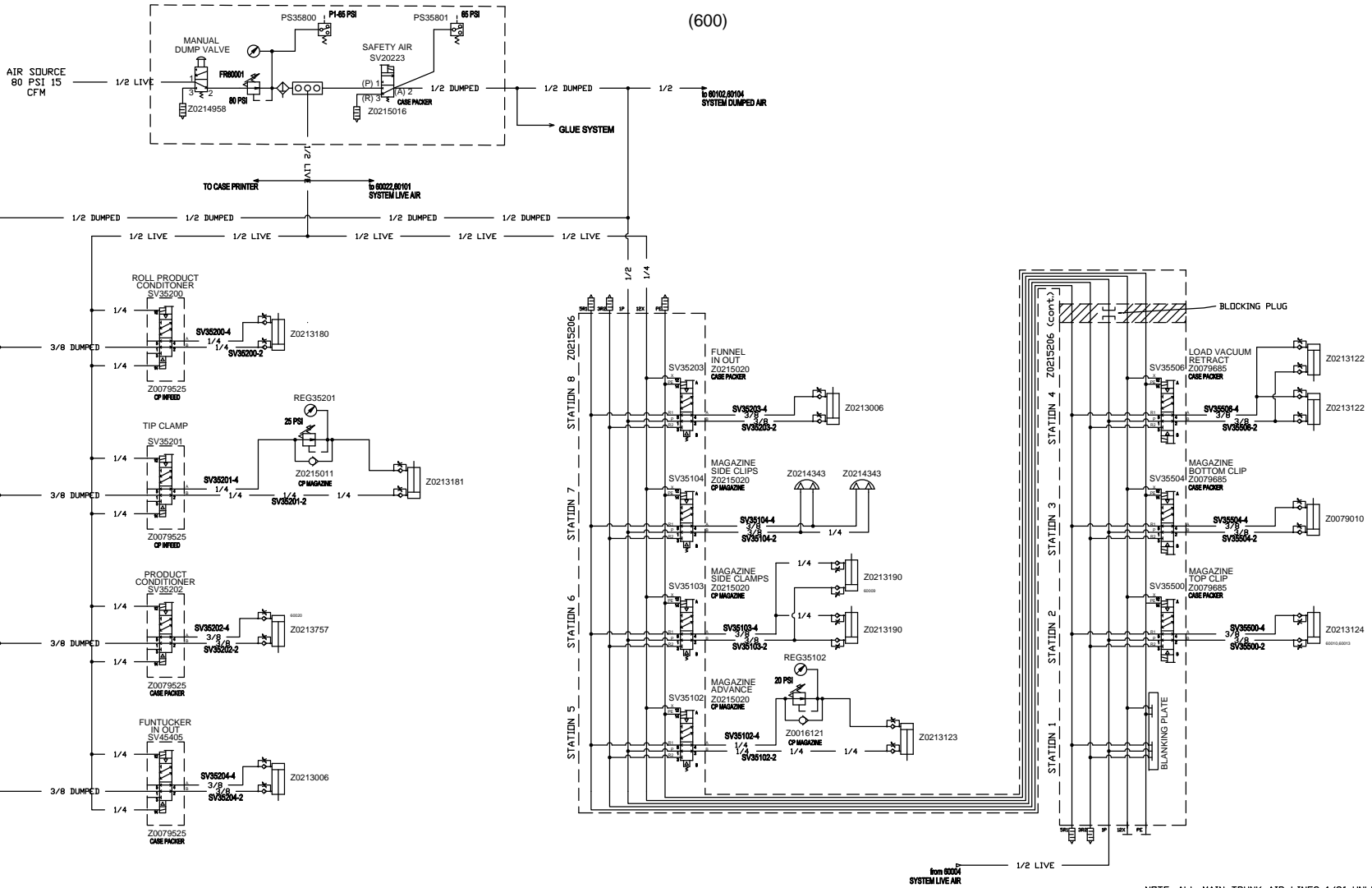
(470)

NOTE: POINT I/O TERMINAL BASE, 8 PT. (Z0202224), USED FOR ALL REMOTE I/O MODULES

AS-BUILT PLANS

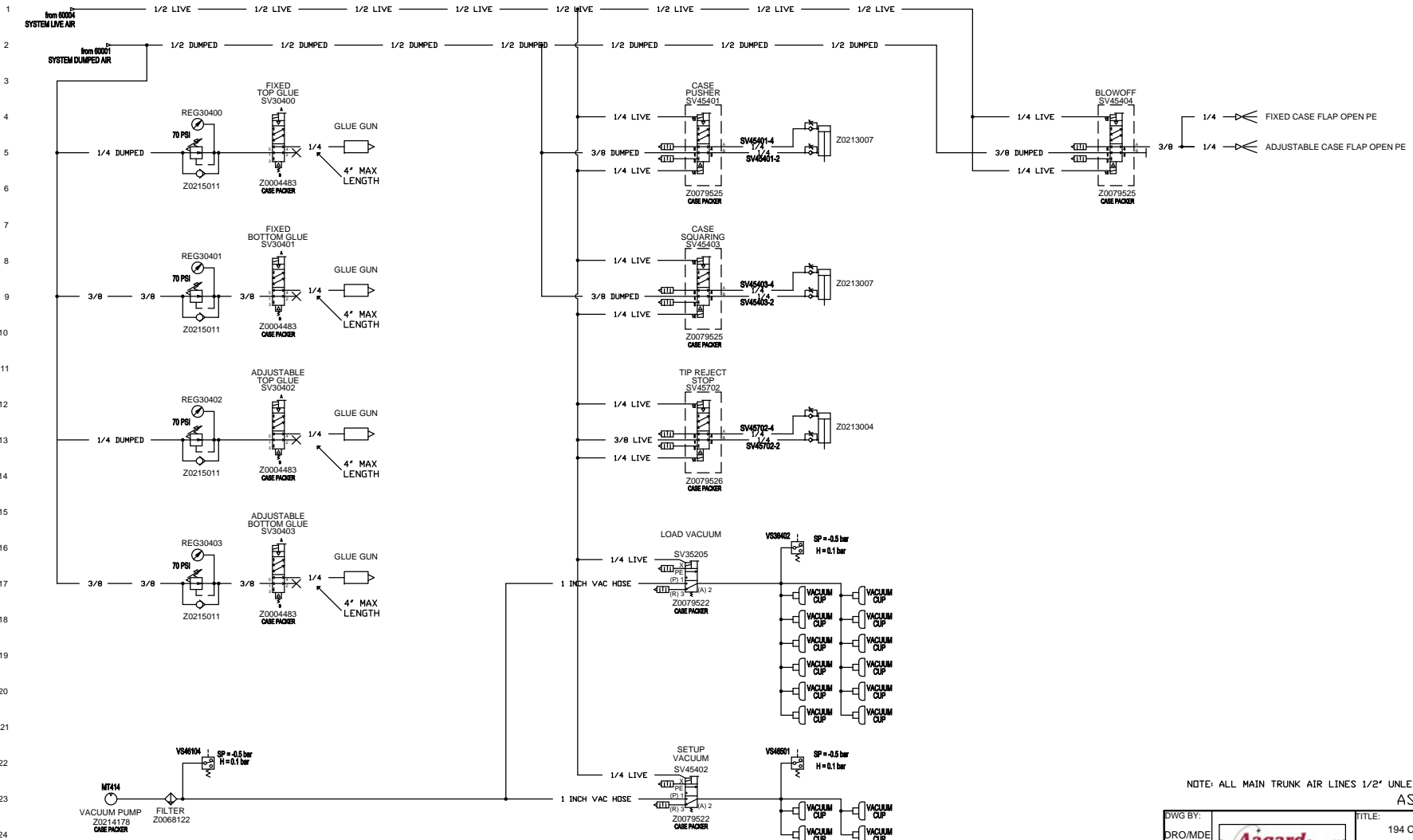
DWG BY:		TITLE:	
DRO/MDE		194 CPW MALAYSIA KDCP	
REV:	3711 IOWA STREET ALEXANDRIA, MN 56308 (320) 763-8043 FAX (320) 763-7859	DATE:	SHEET:
1		1-17-12	45 OF 48
		DRAWING NO:	
		PLC REMOTE 3 SLOTS 14-15	

(600)



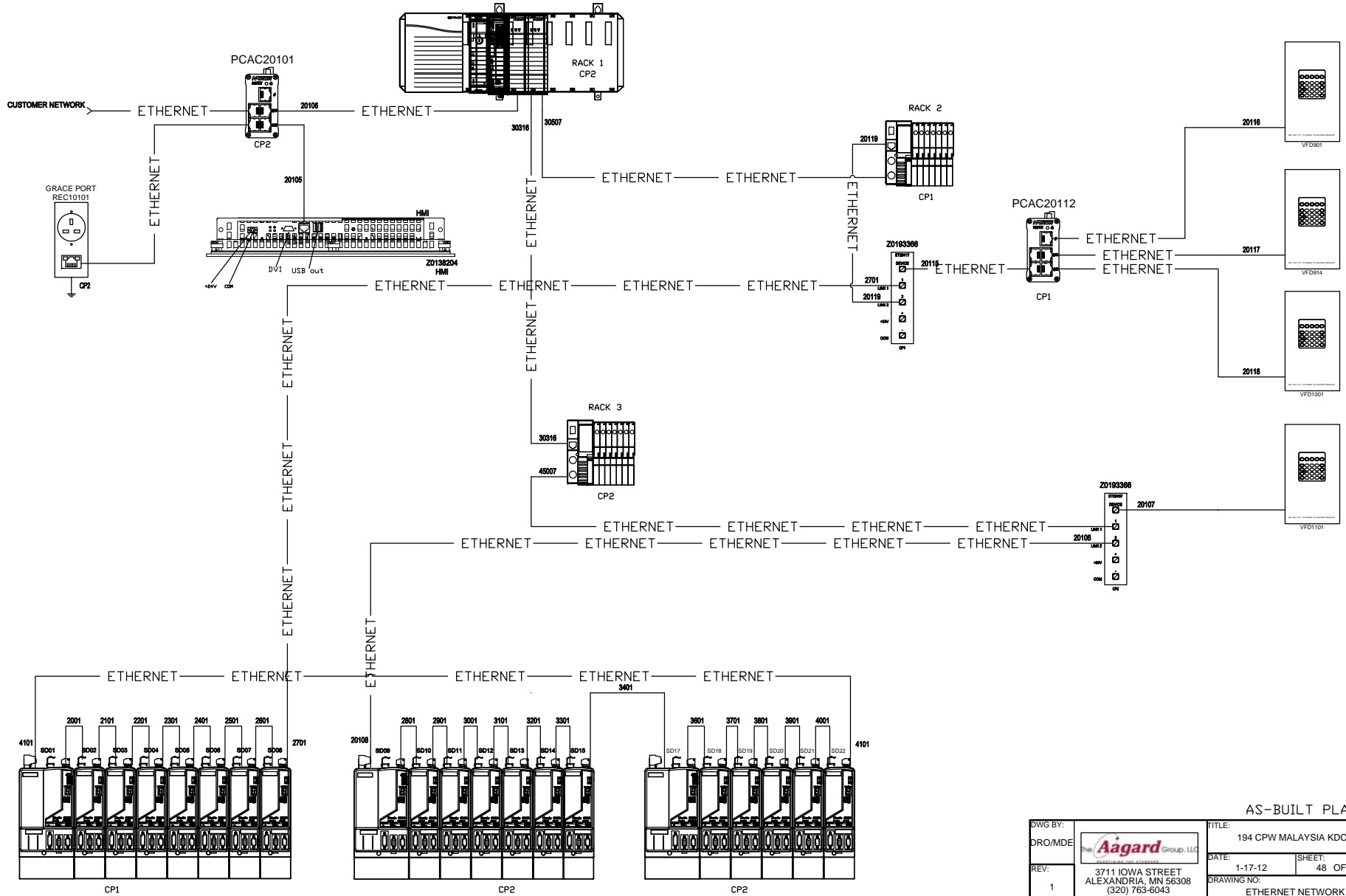
DWG BY:		TITLE:	
DRO/MDE:		194 CPW MALAYSIA KDCP	
REV:	3711 IOWA STREET ALEXANDRIA, MN 56308 (320) 763-6043 FAX (320) 763-7859	DATE:	SHEET:
1		1-17-12	46 OF 48
		DRAWING NO:	
		CASE PACKER PNEUMATICS 1	

(601)



NOTE: ALL MAIN TRUNK AIR LINES 1/2" UNLESS OTHERWISE NOTED.  
AS-BUILT PLANS

DWG BY:		TITLE:	194 CPW MALAYSIA KDCP	
DRO/MDE:		DATE:	1-17-12	SHEET: 47 OF 48
REV:	1	DRAWING NO.:	CASE PACKER PNEUMATICS 2	
		3711 IOWA STREET ALEXANDRIA, MN 56308 (320) 763-6043 FAX (320) 763-7859		



AS-BUILT PLANS

DWG BY:		TITLE: 194 CPW MALAYSIA KDCP	
DRO/MDE:		DATE: 1-17-12	SHEET: 48 OF 48
REV: 1	3711 IOWA STREET ALEXANDRIA, MN 56308 (320) 763-6043 FAX (320) 763-7859	DRAWING NO: ETHERNET NETWORK	